

DU THORAX FEVRIER 2013

ANATOMIE DES SEGMENTS PULMONAIRES ET DU MEDIASTIN

A. OLIVER

Service de Radiologie Hôpitaux de Brabois, Vandoeuvre-lès-Nancy



THORAX

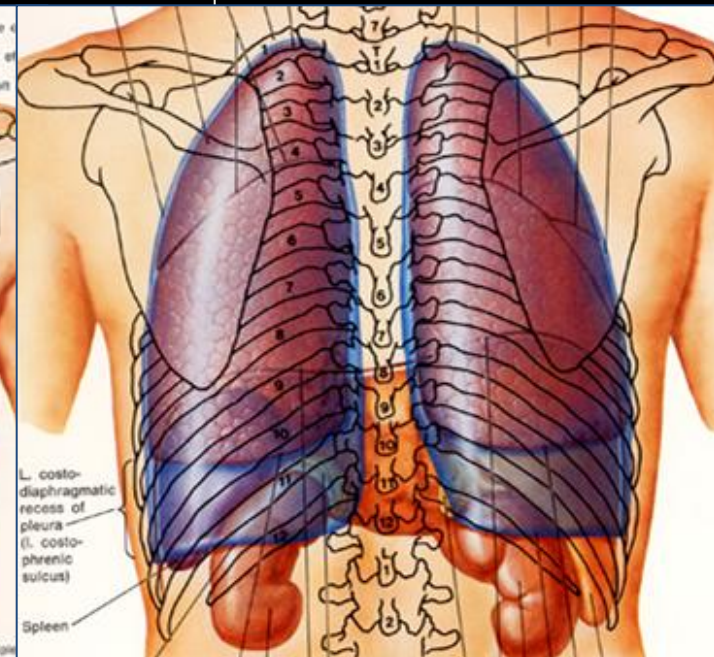
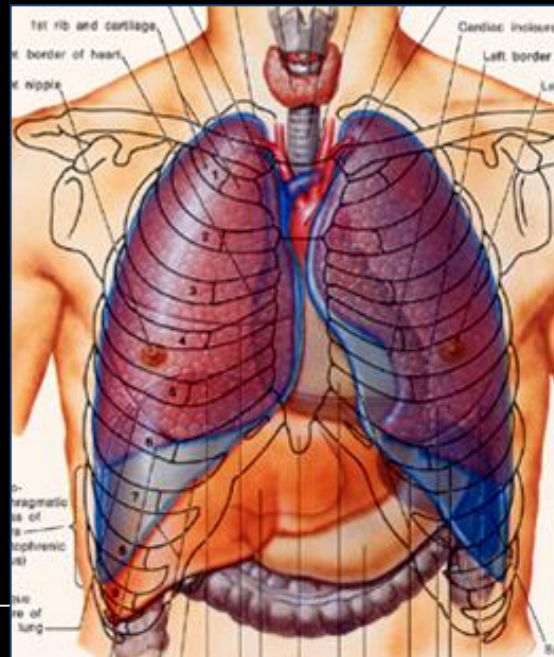
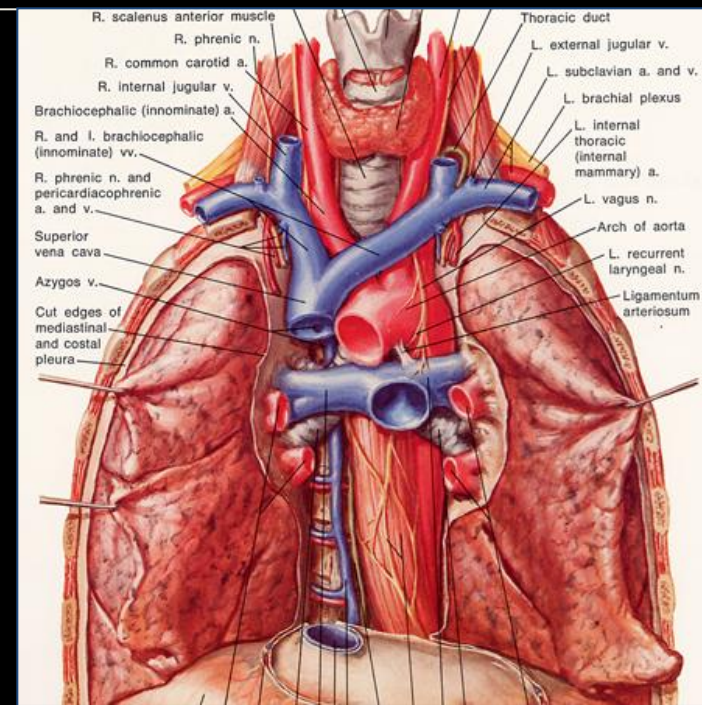
1/ RADIOANATOMIE PULMONAIRE ET DES BRONCHES

2/ RADIOANATOMIE DU MEDIASTIN

- VAISSEAUX
- CŒUR
- ŒSOPHAGE
- CHAINES GANGLIONNAIRES

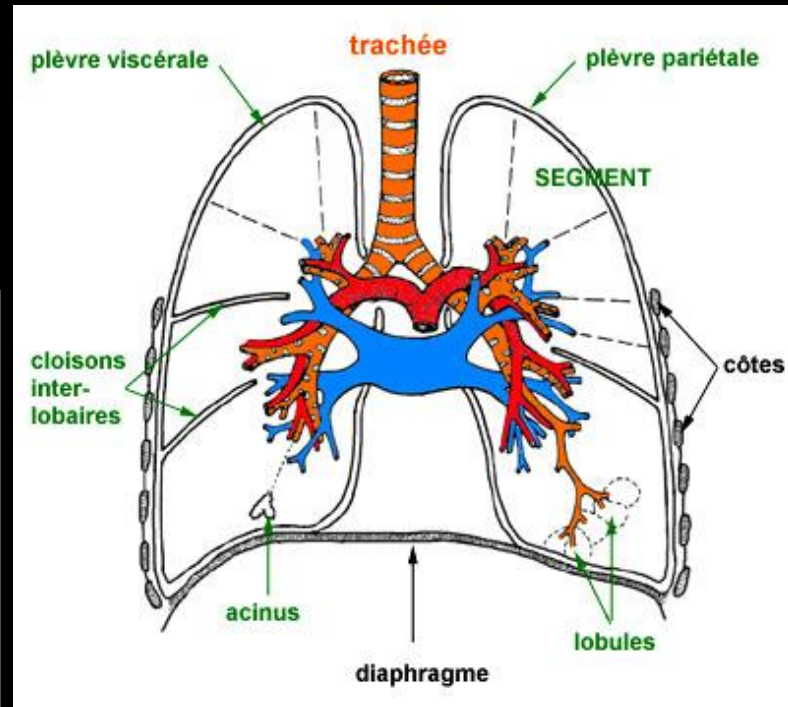
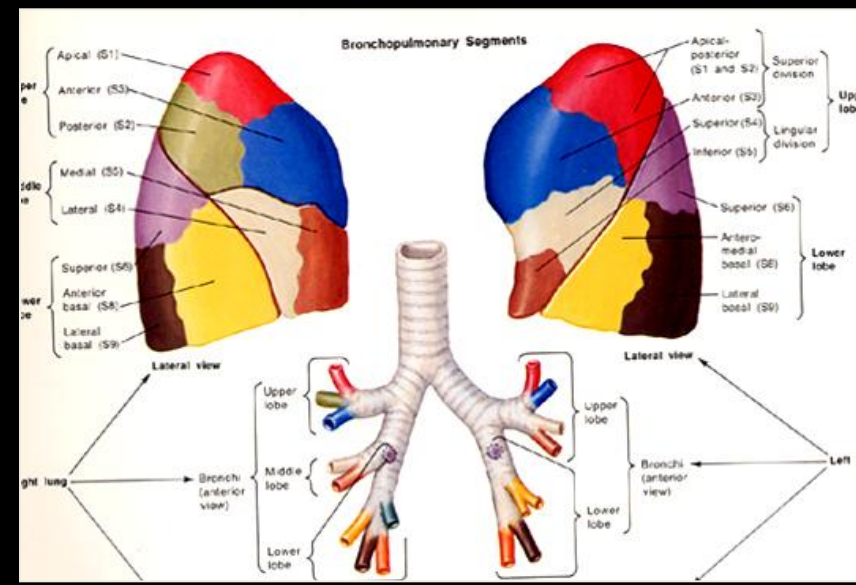
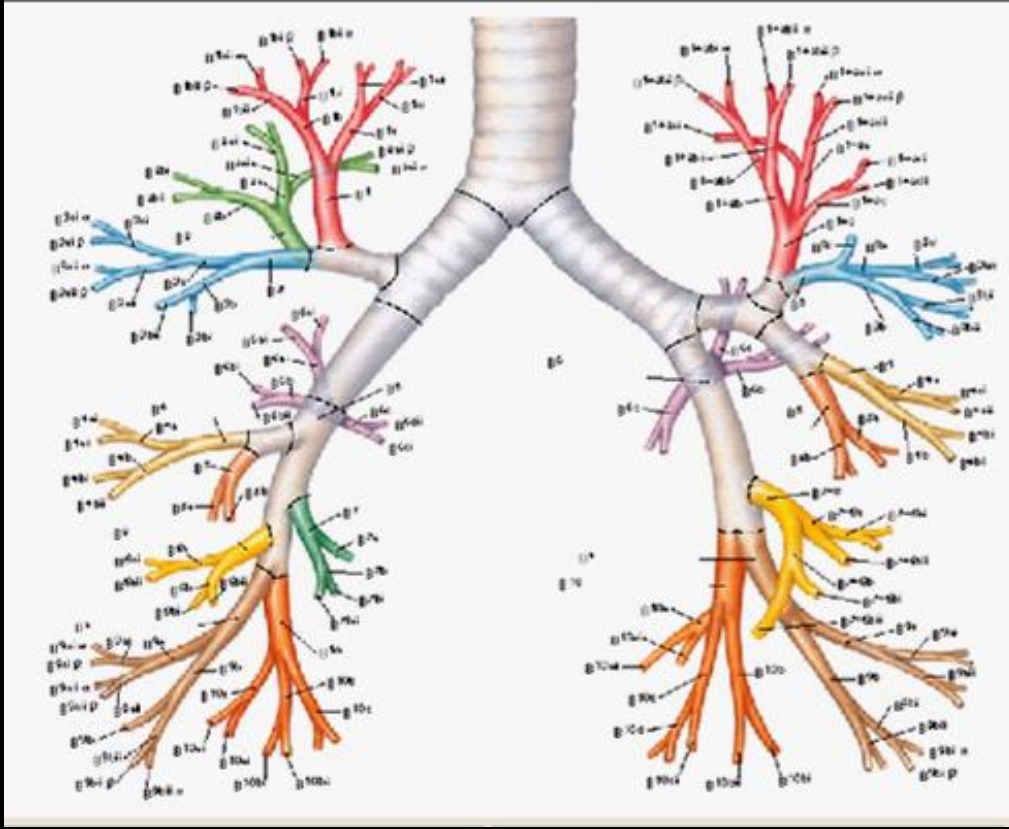
3/ PAROI THORACIQUE

- PLEVRE
- COTES

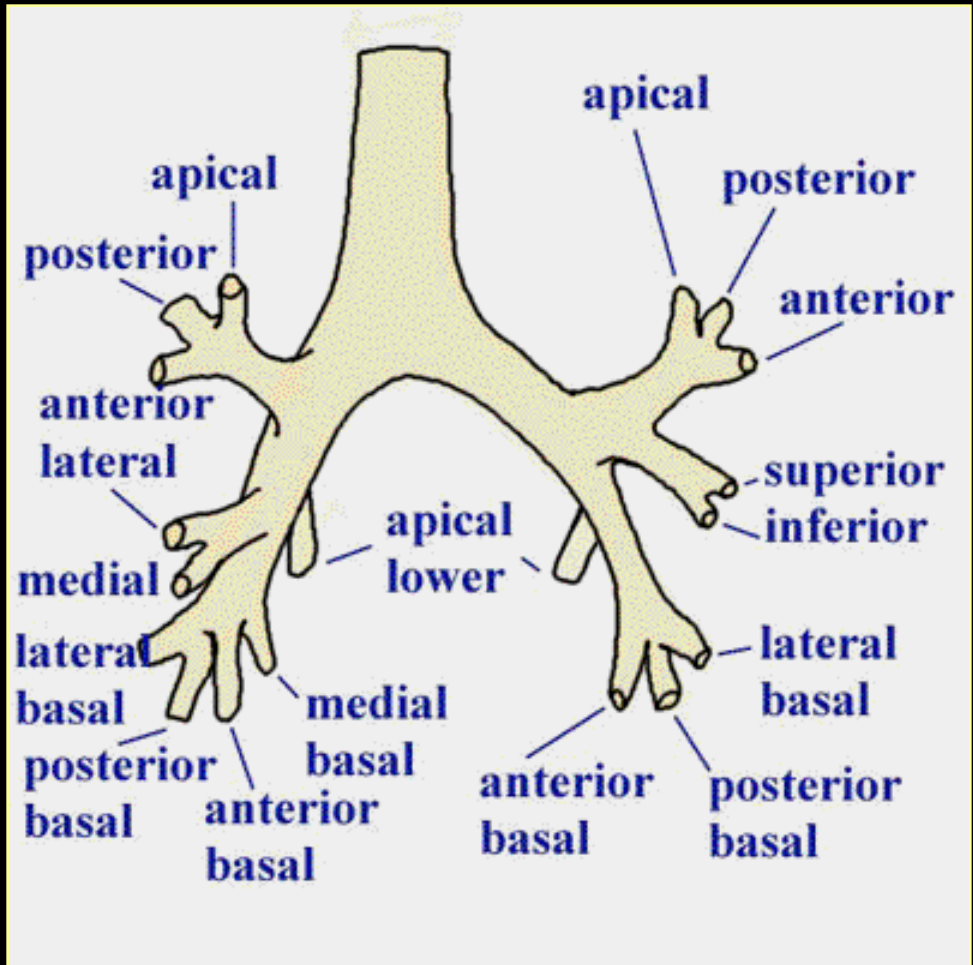
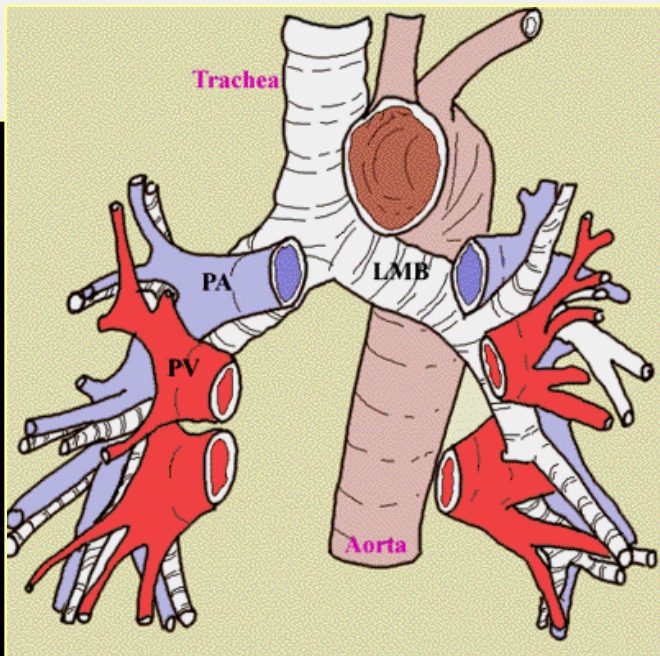
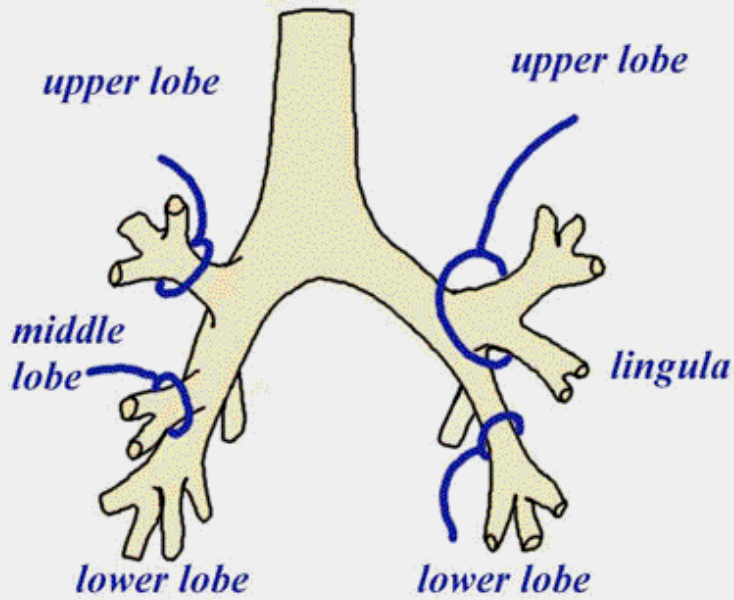




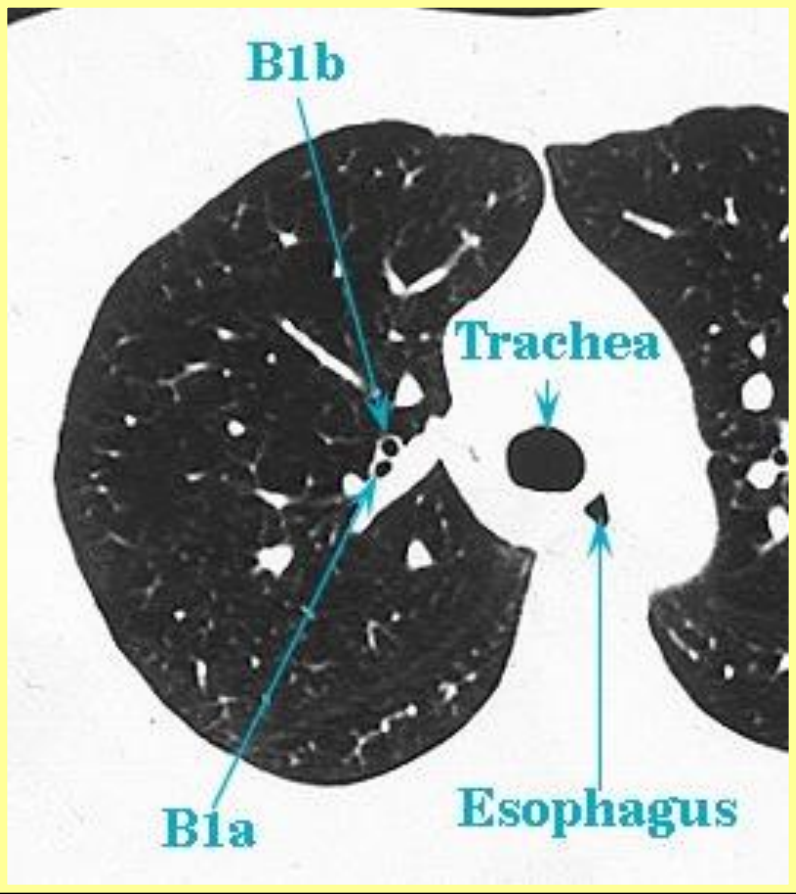
1/ RADIOANATOMIE PULMONAIRE ET DES BRONCHES



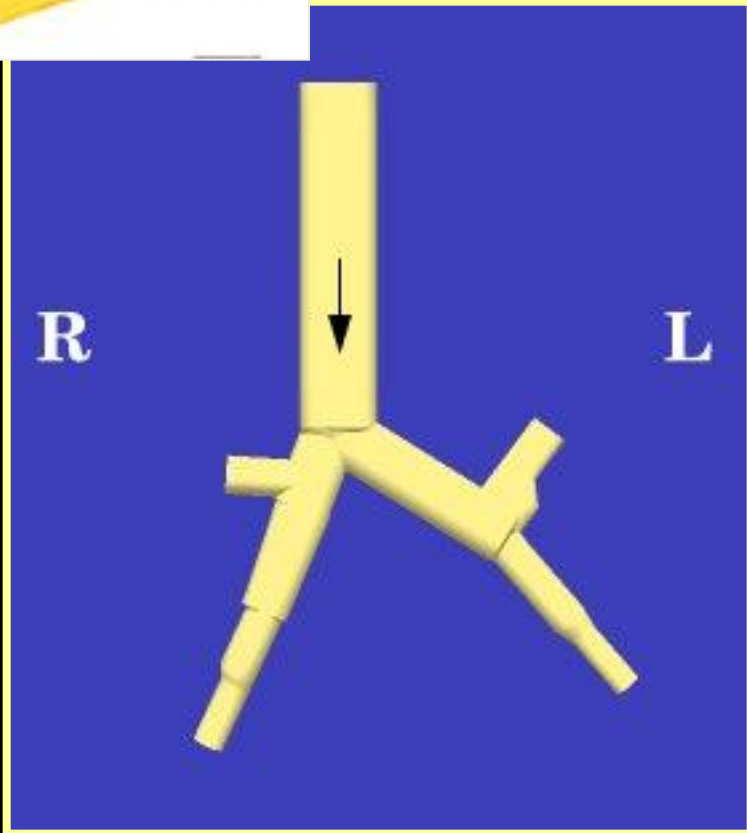
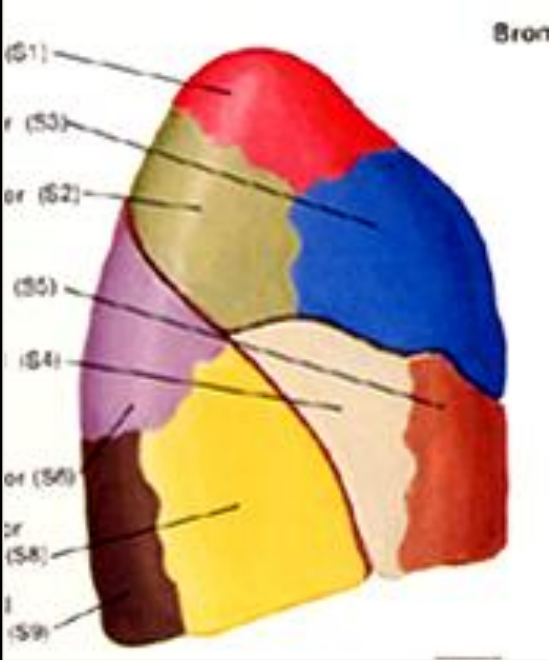
Systeme bronchique

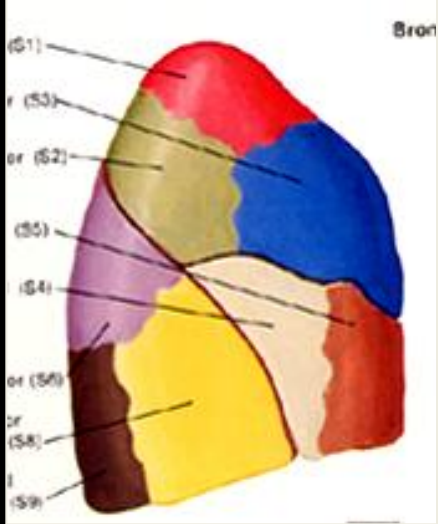


POUMON DROIT



B1 apical



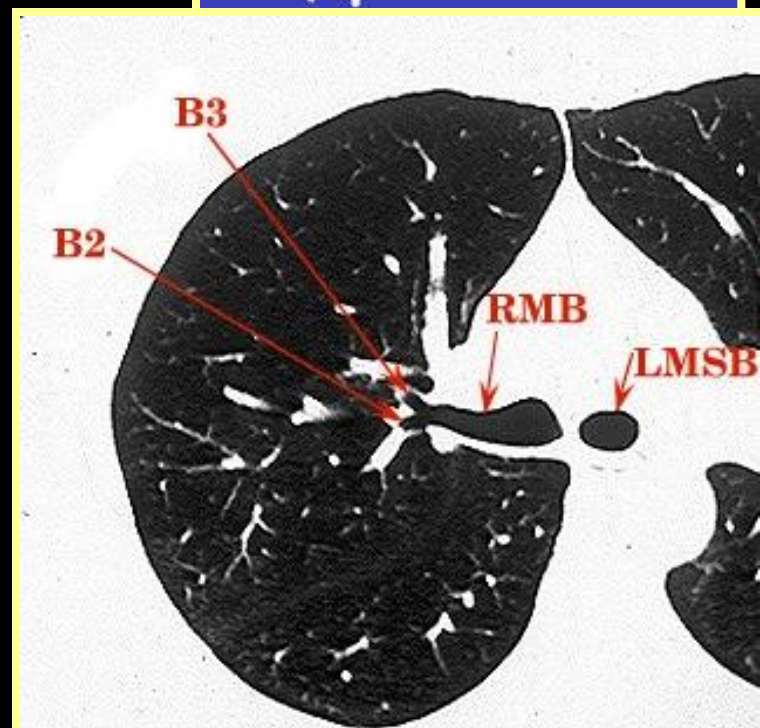
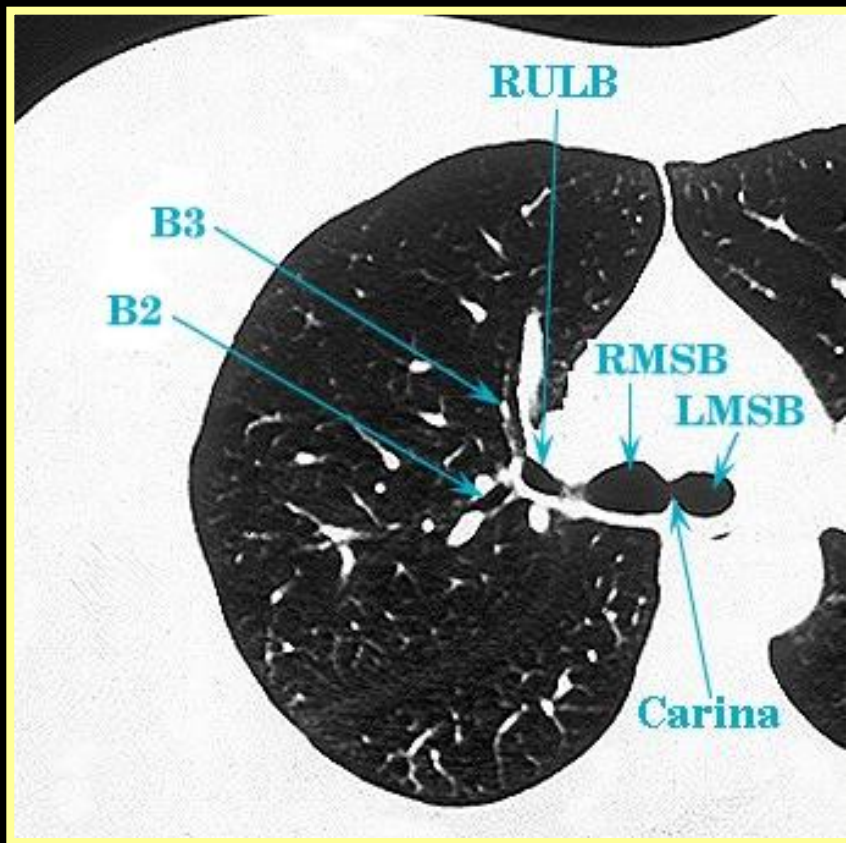
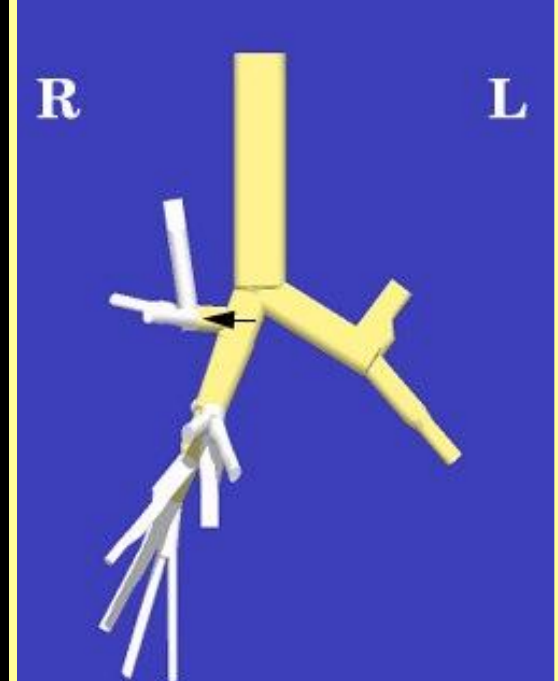


Bronche lobaire supérieure droite

B1 apical

B2 postérieur

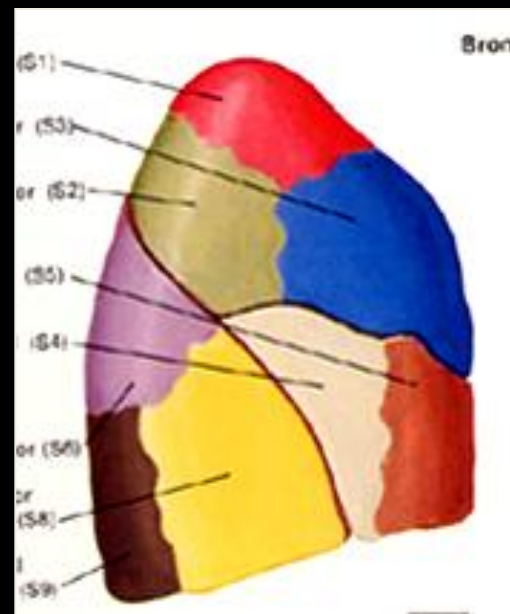
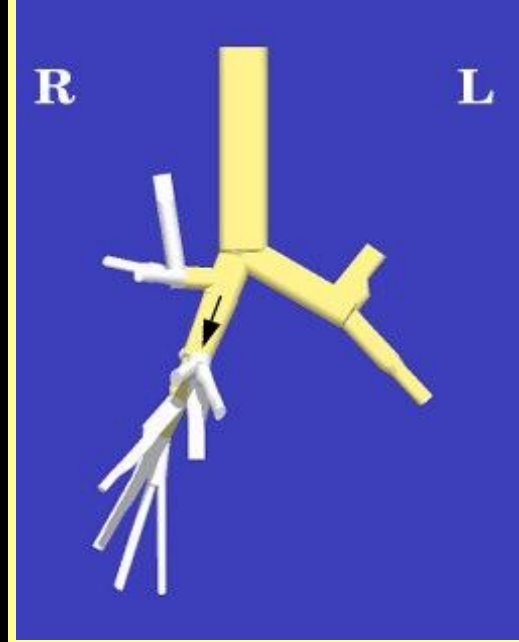
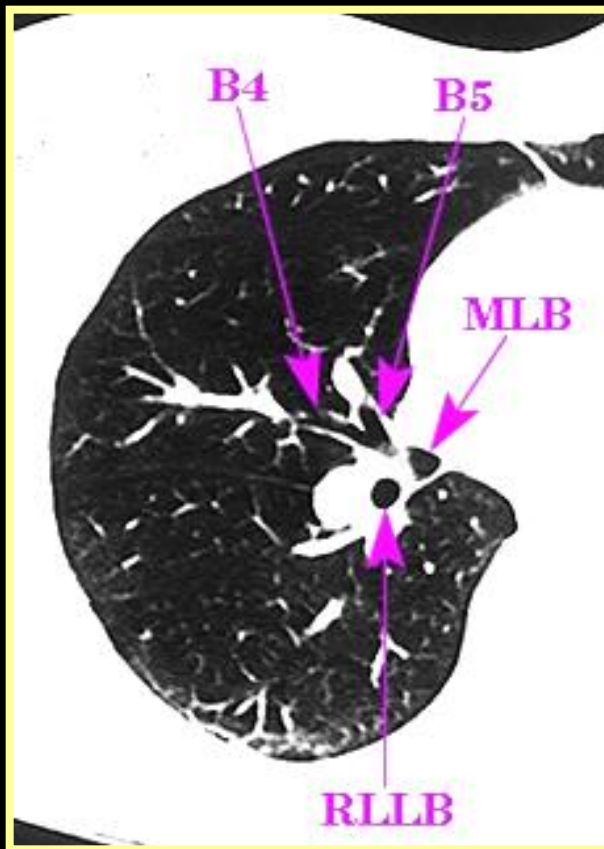
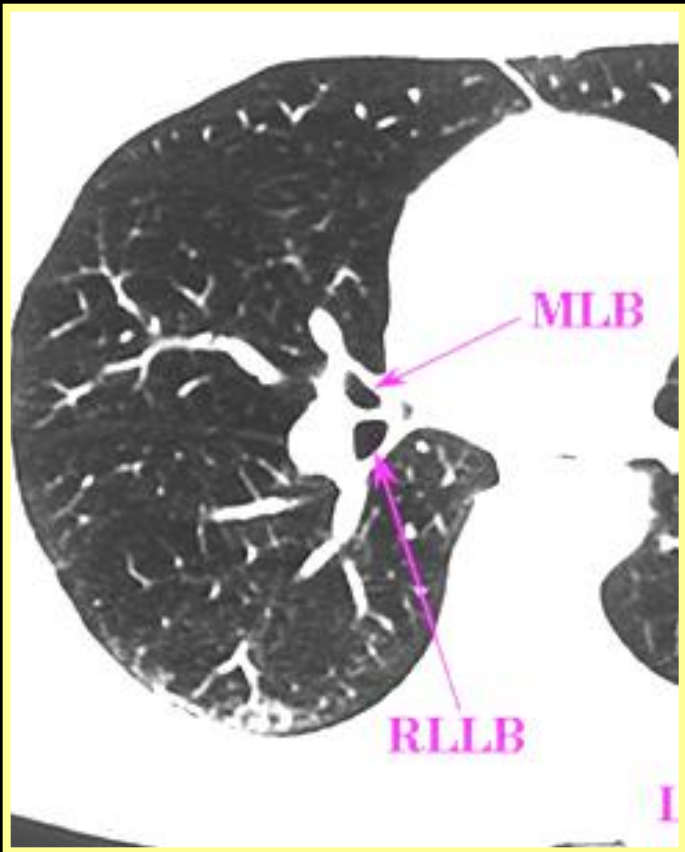
B3 antérieur

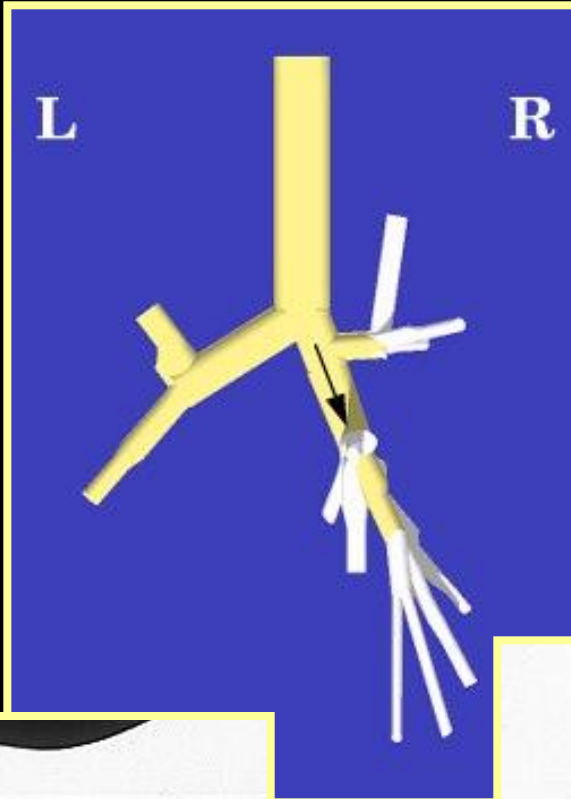
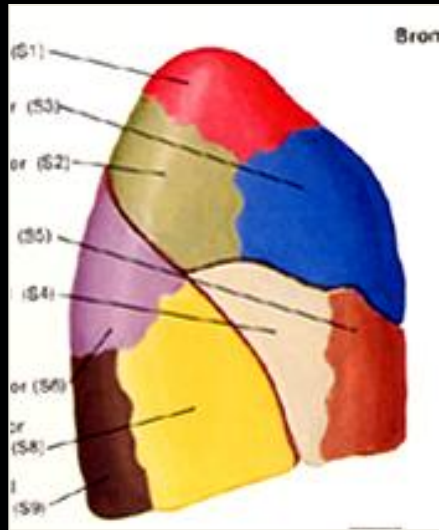


Bronche lobaire moyenne

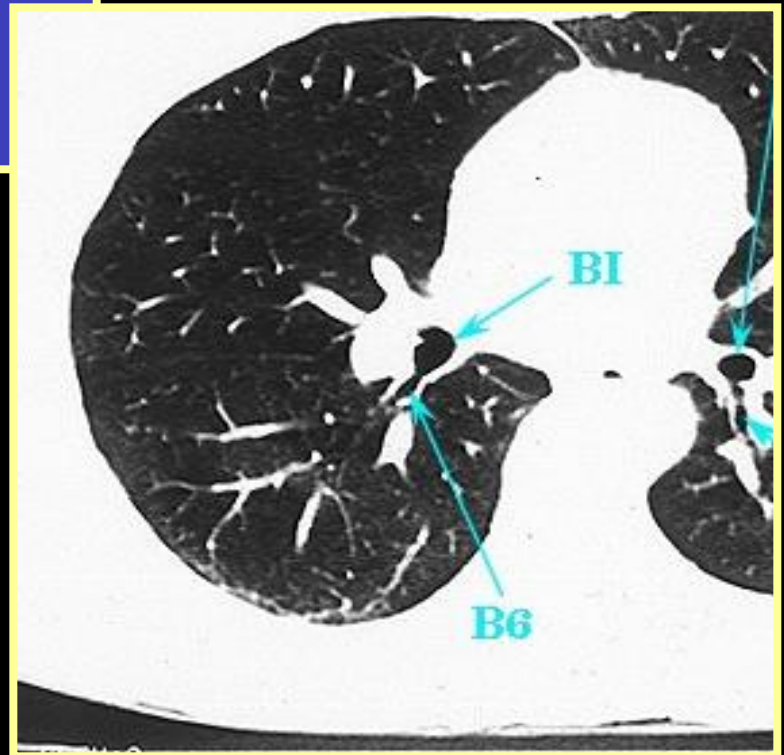
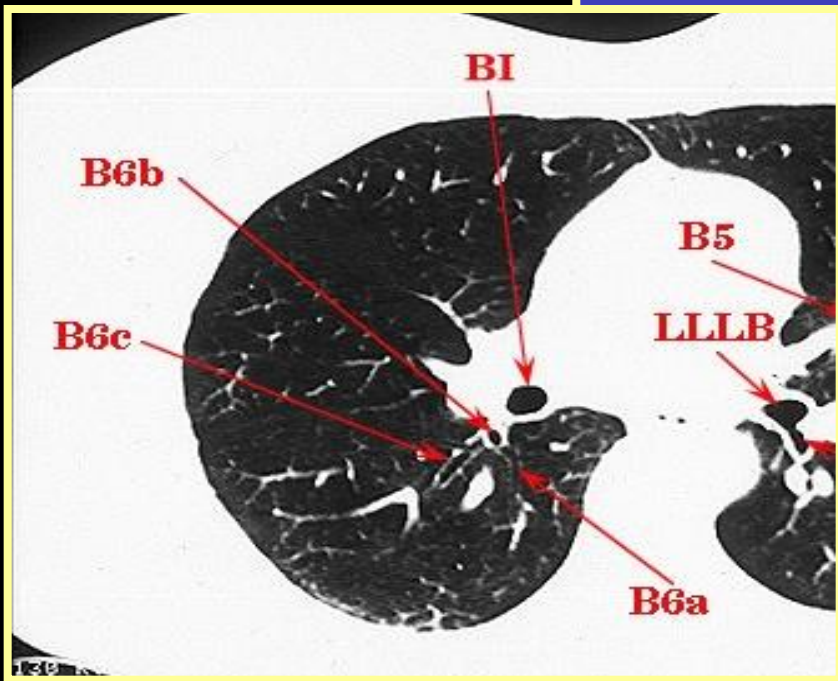
B4 latéral

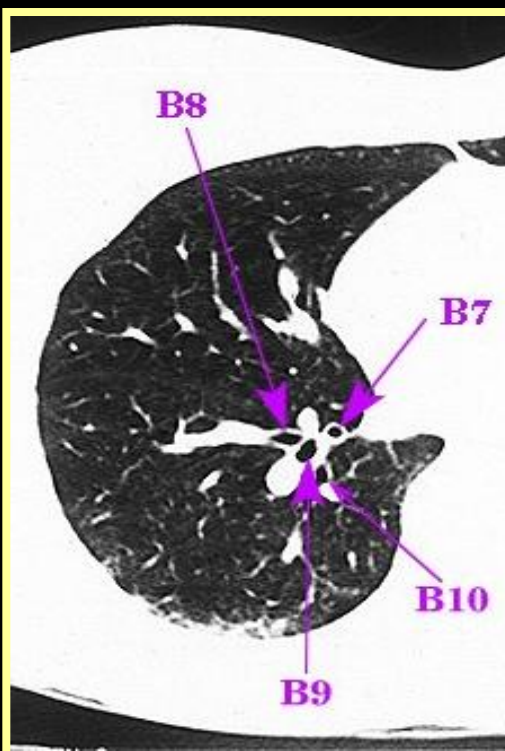
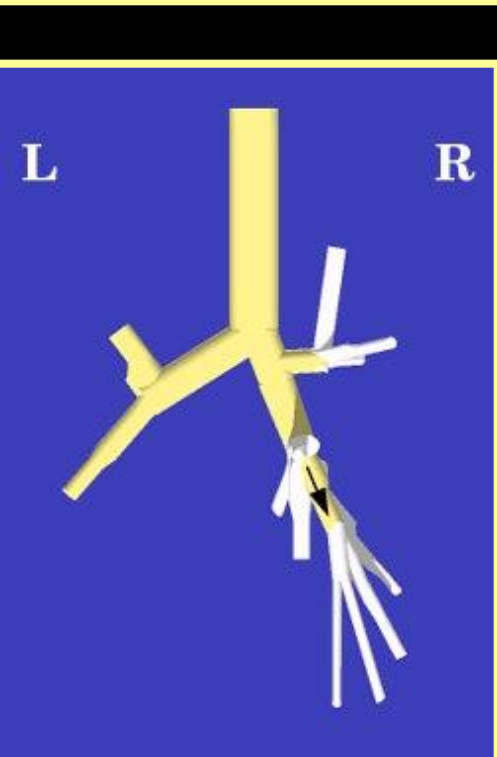
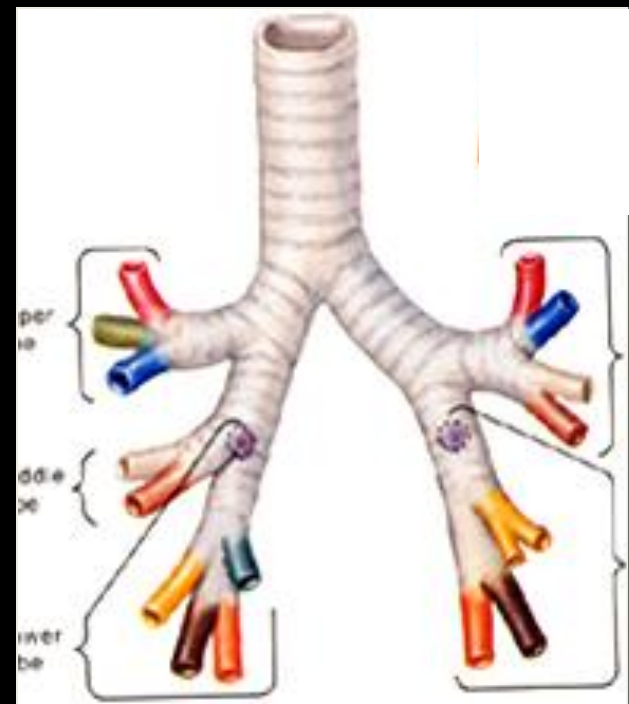
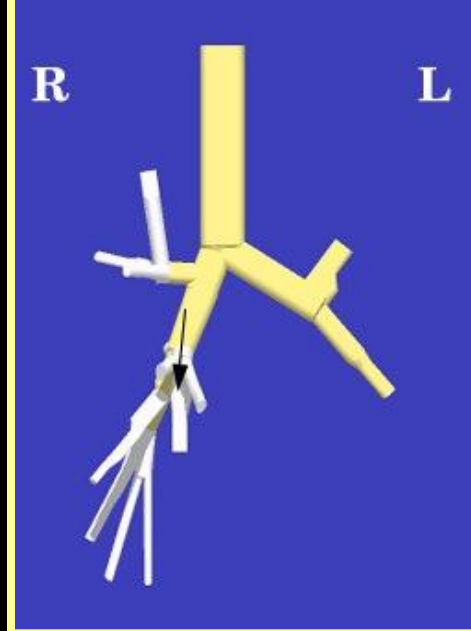
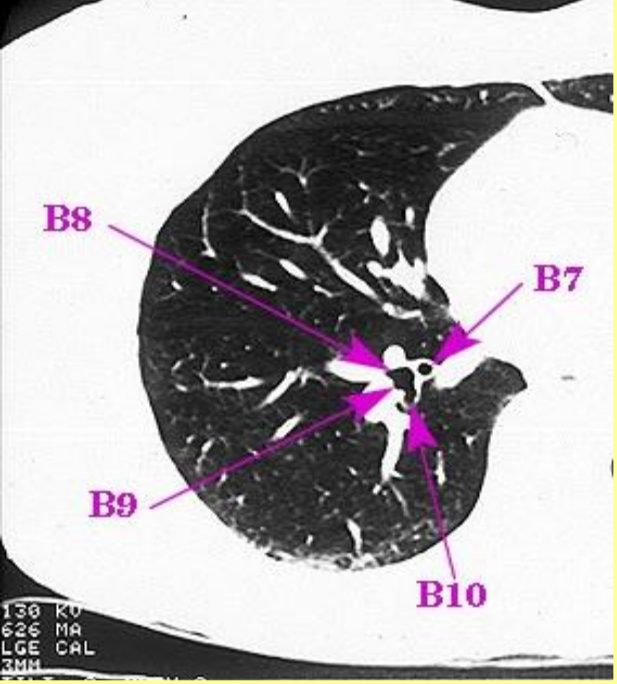
B5 médial



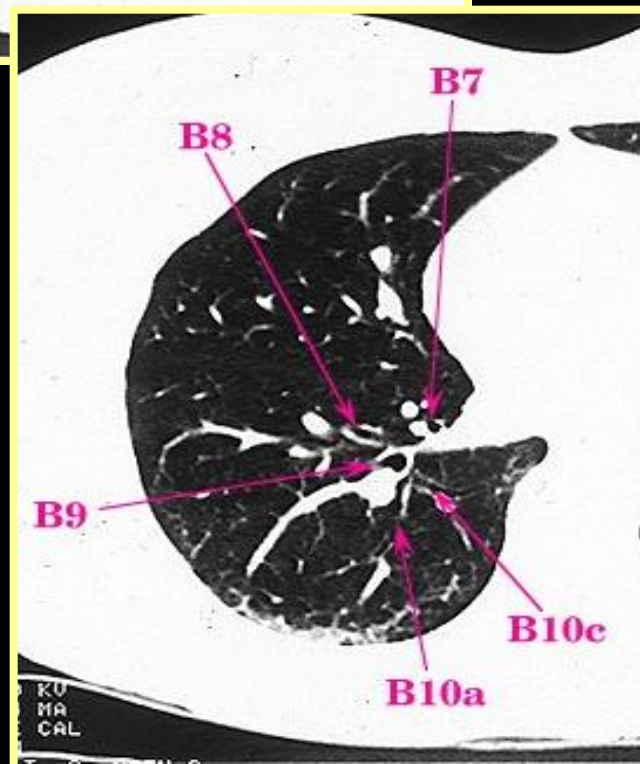
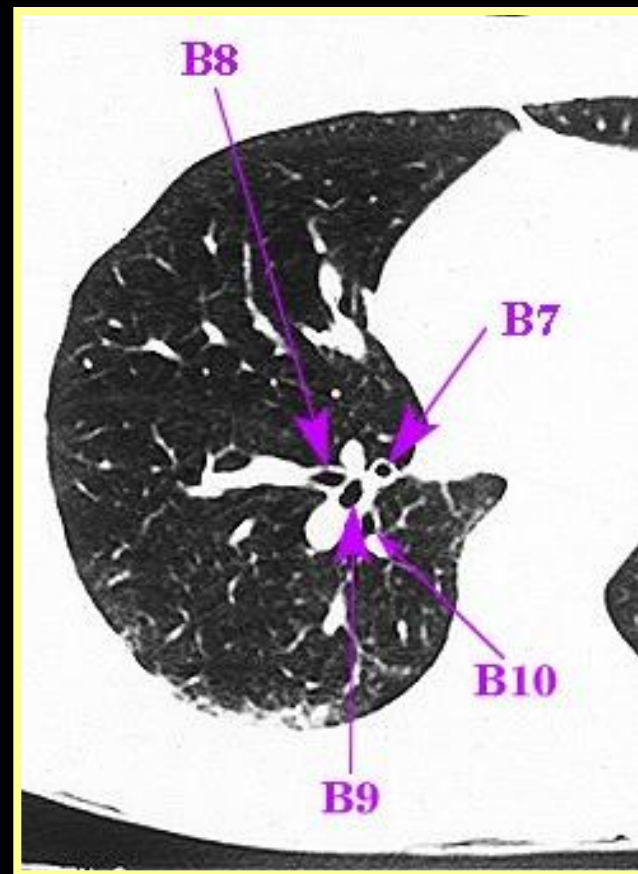
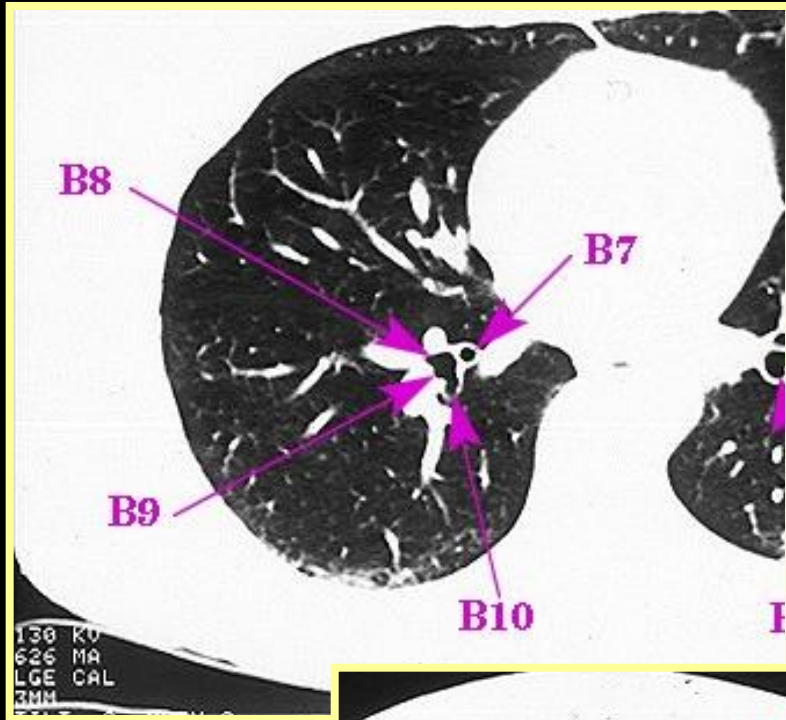


Bronche lobaire inférieure droite
B6 supérieur





B7 médiale basale
 B8/B9/B10 tronc commun
 antérobasal
 Latérobasal
 postérobasal



B7 médiale

B8 antérobasal

B9 latérobasal

B10 postérobasal

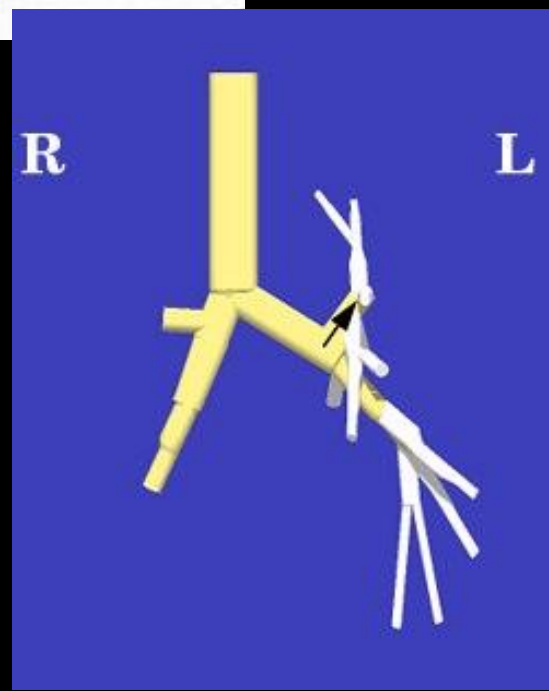
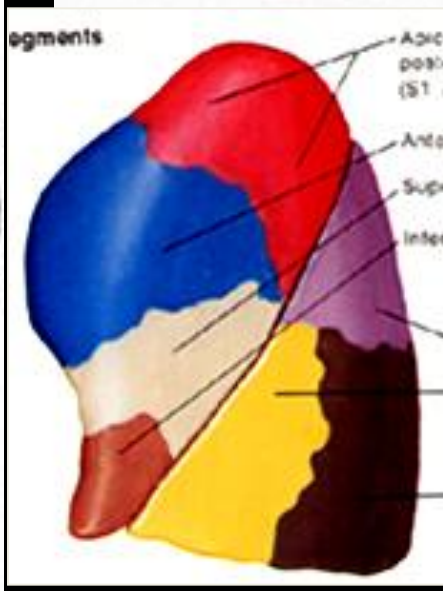
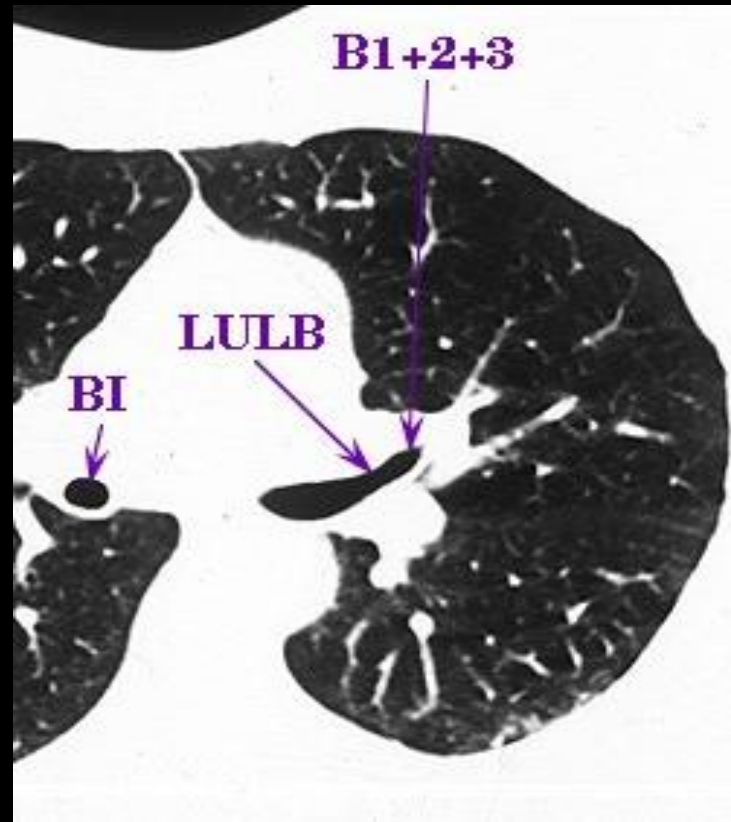
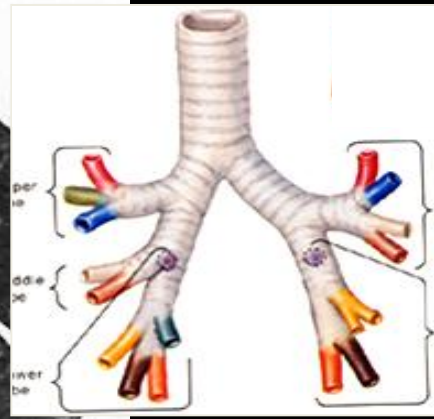
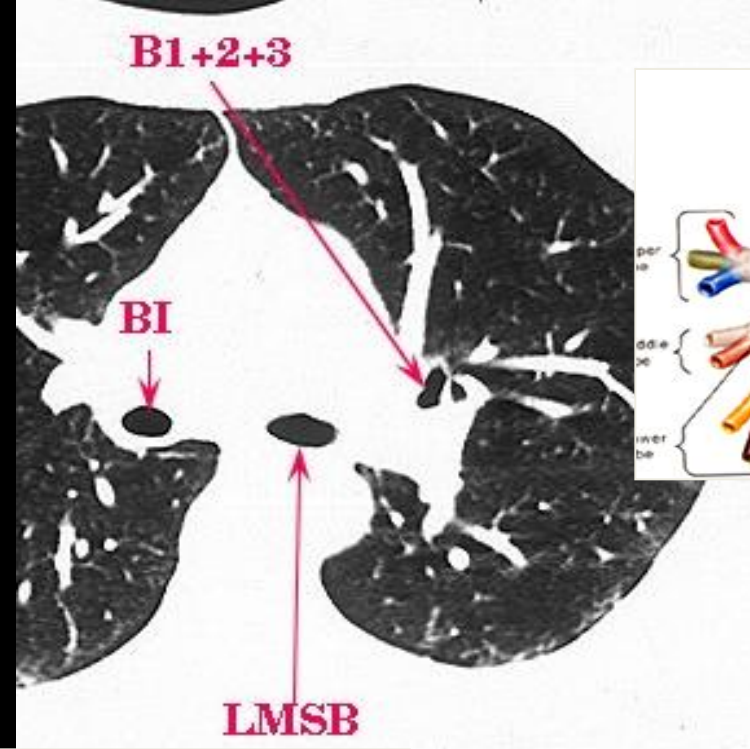
POUMON GAUCHE

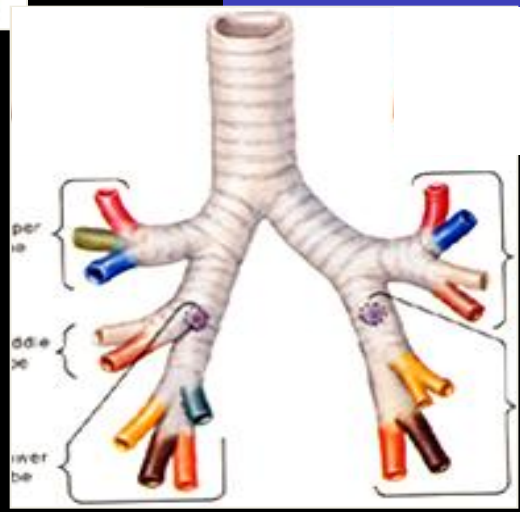
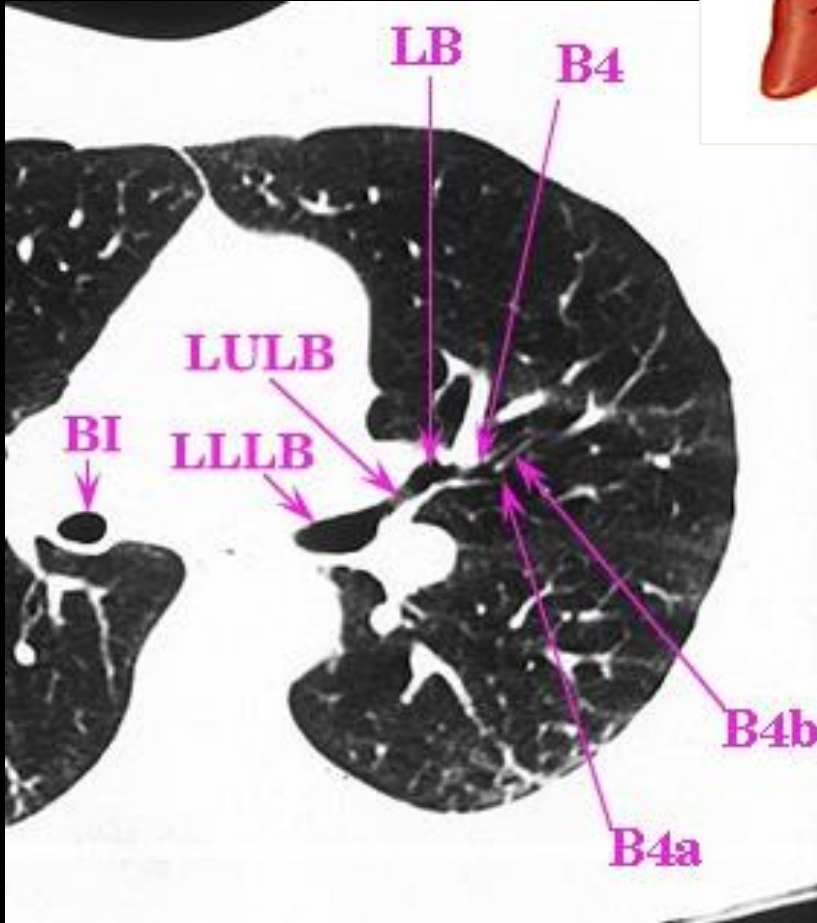
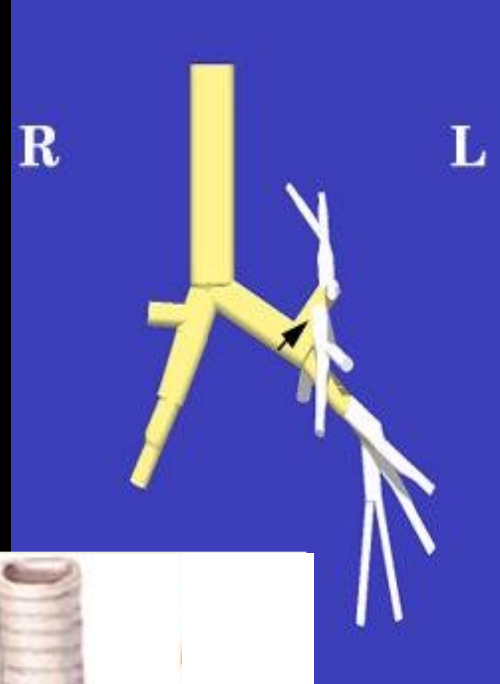
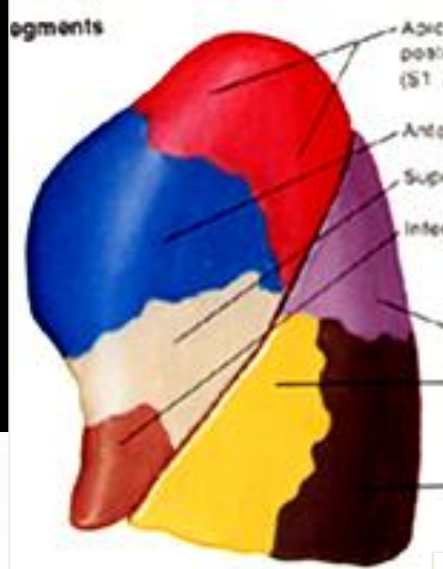
Bronche Lobaire Supérieure

B1+2 apical postérieur

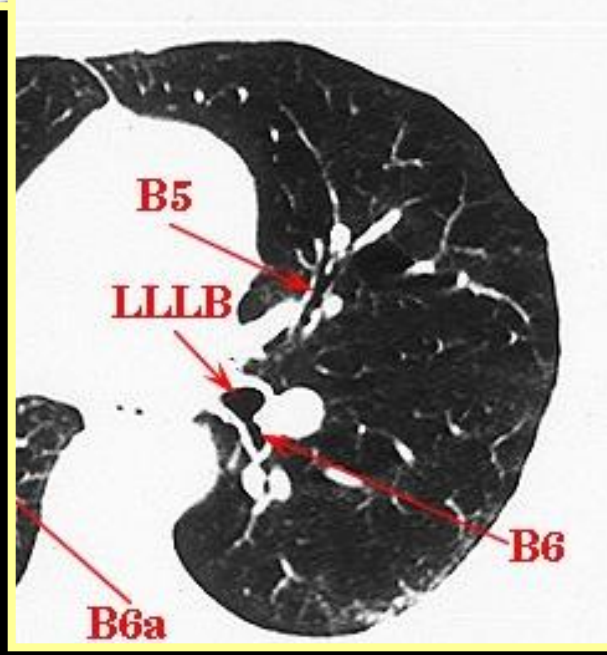
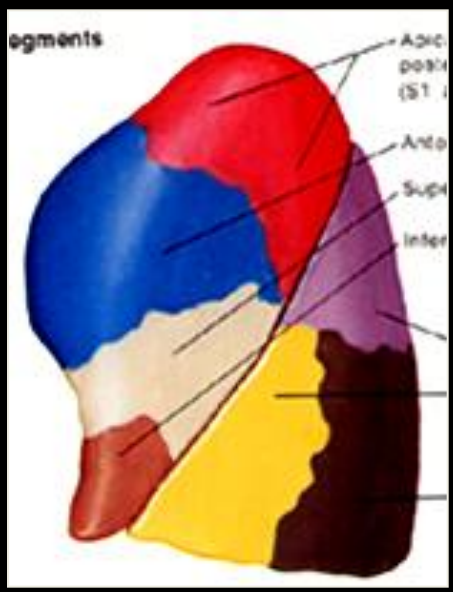
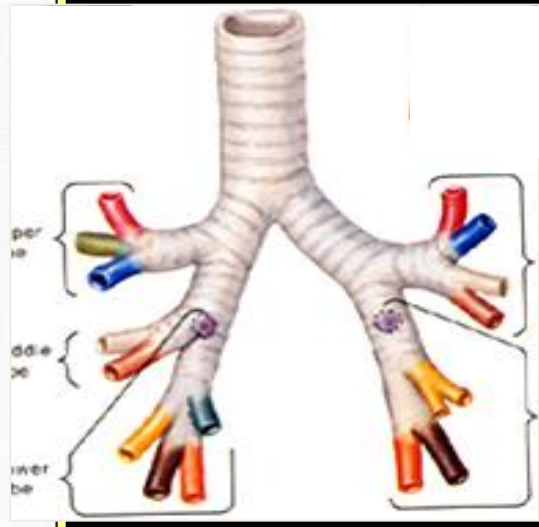
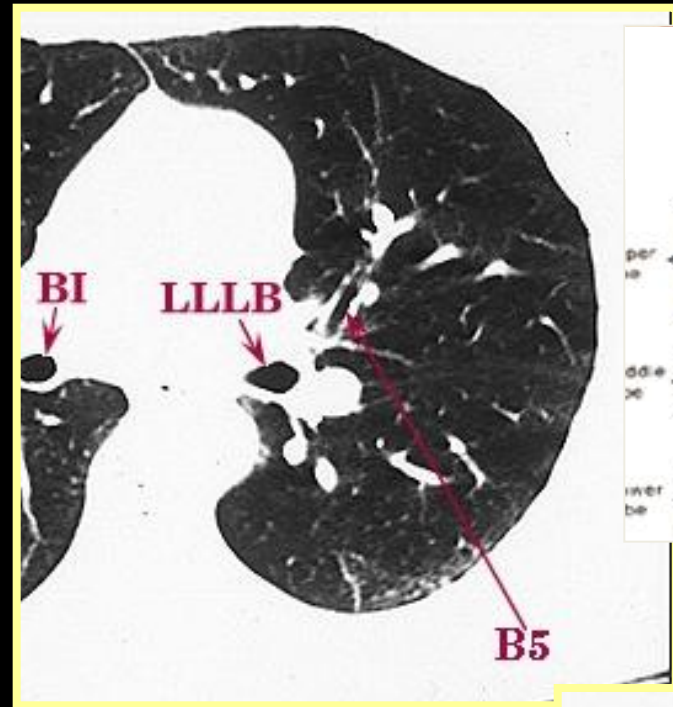
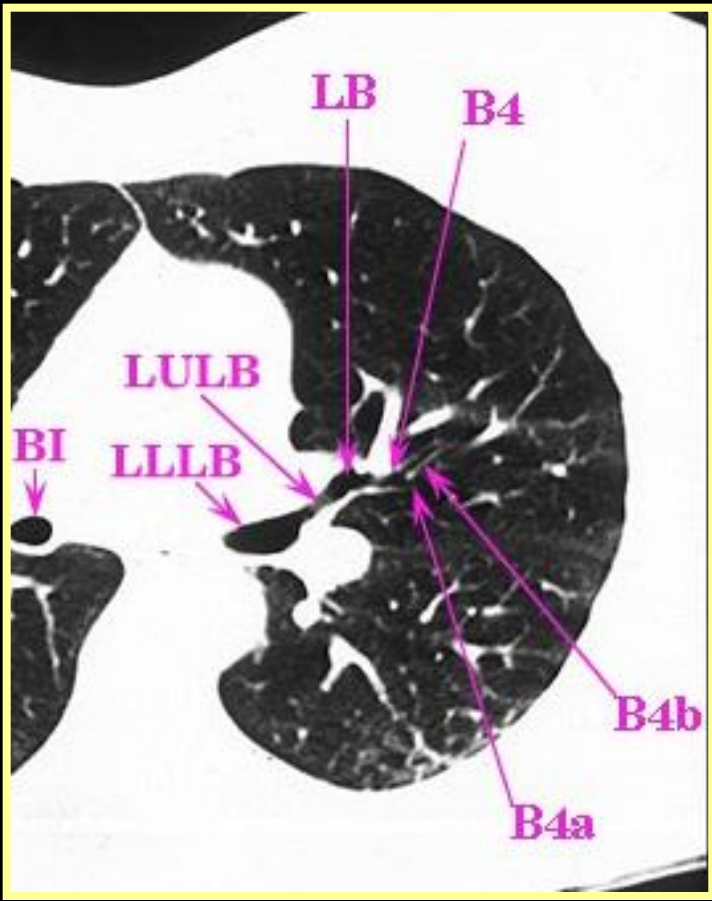
B3 antérieur

= culmen





Bronche lobaire supérieure:
 Bronche linguale (tronc commun)
 B4 linguale supérieur



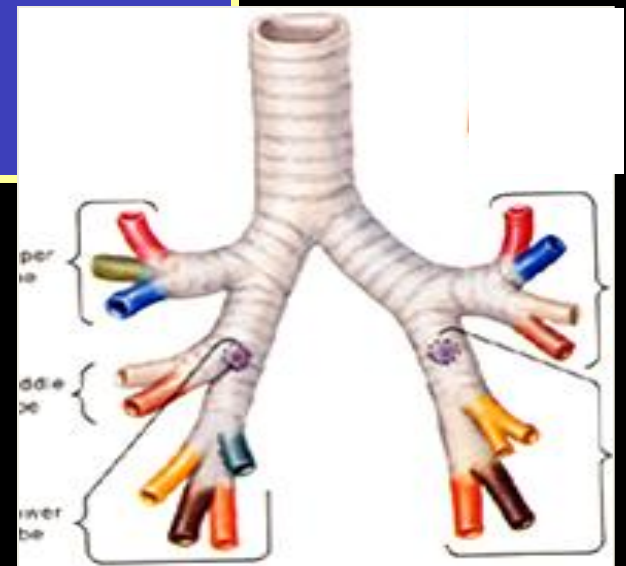
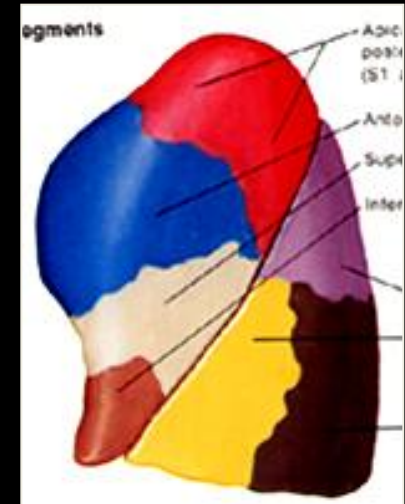
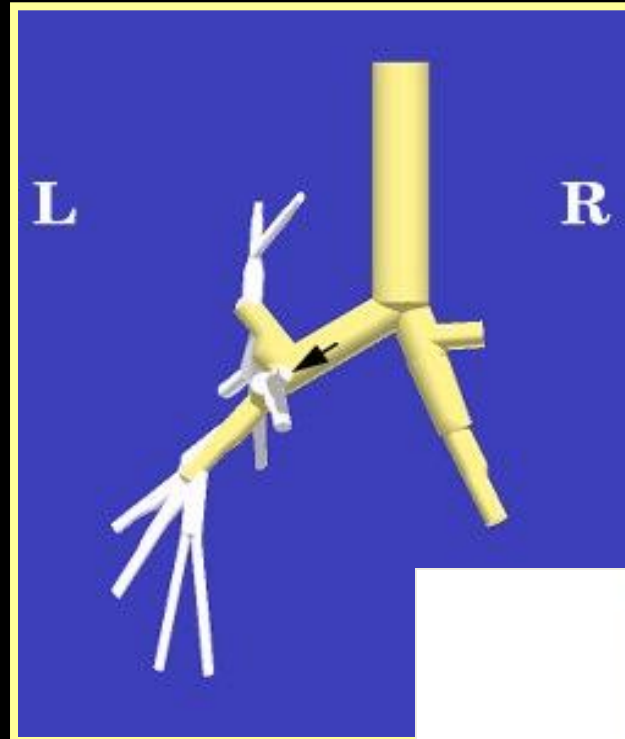
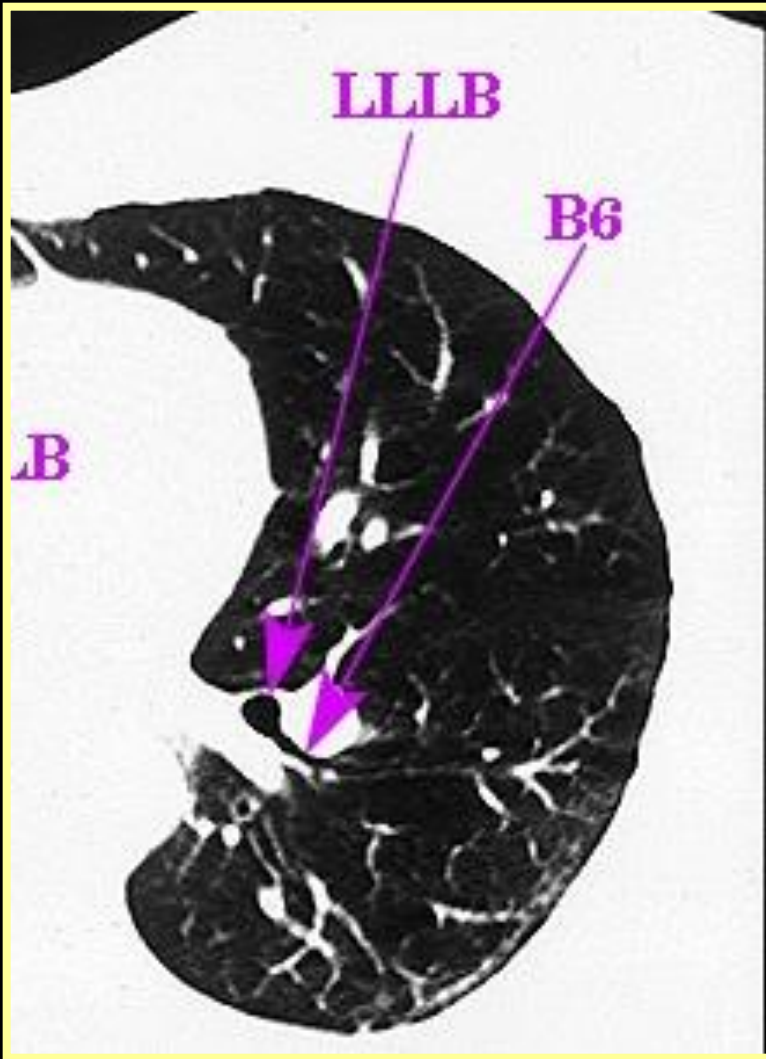
**Bronches segmentaires
lingulaires**

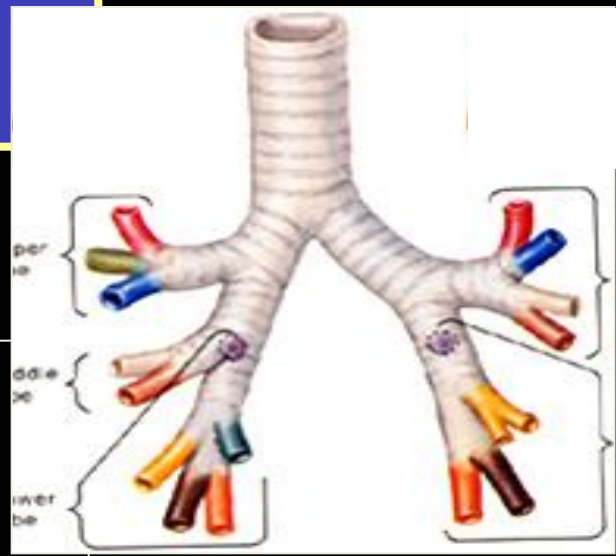
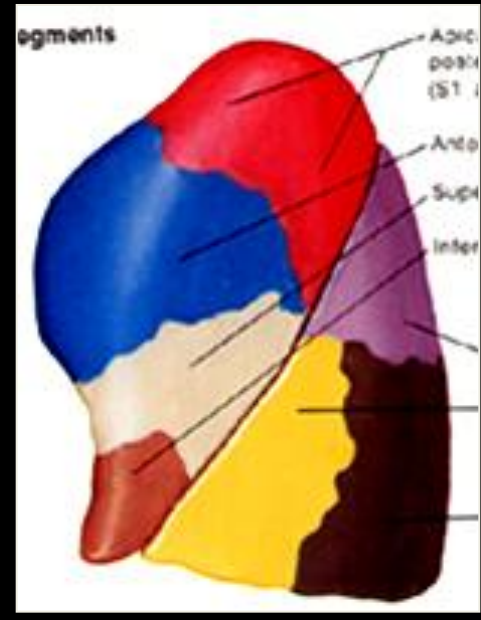
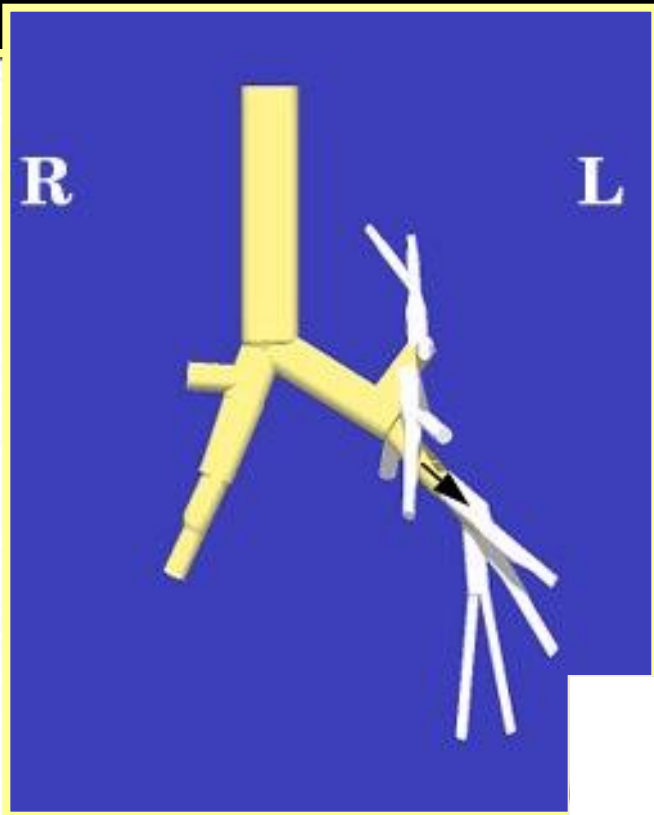
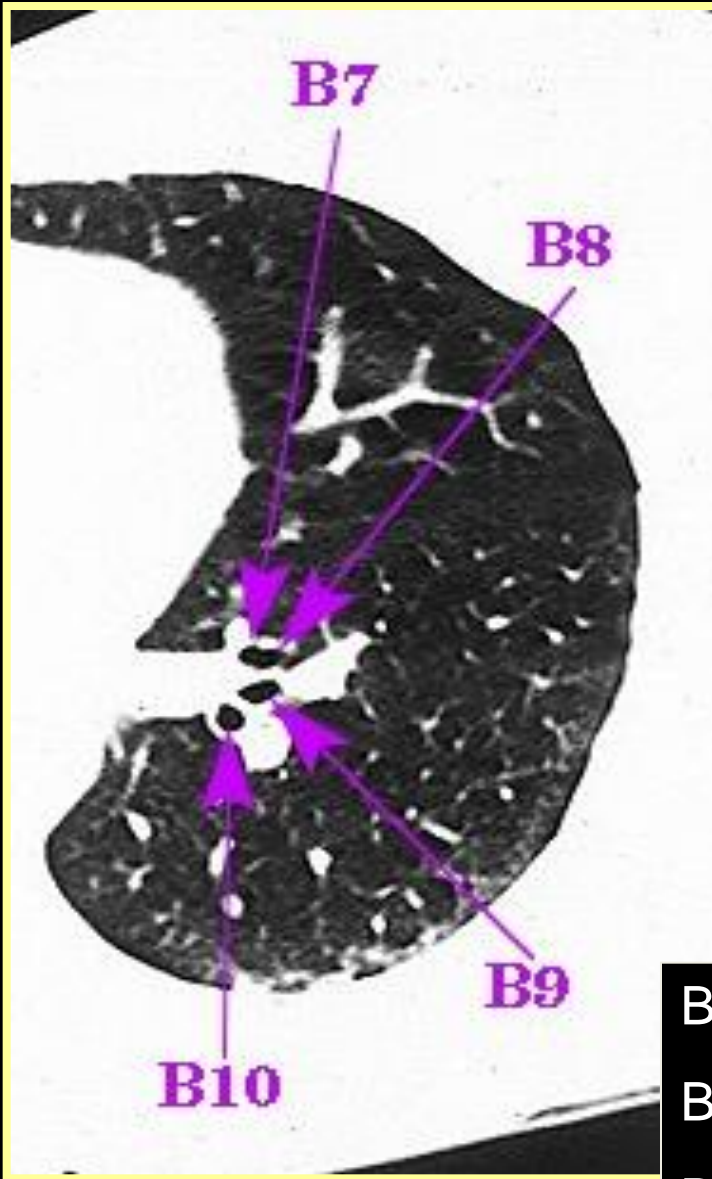
B4 supérieure

B5 inférieure

Bronche lobaire inférieure G

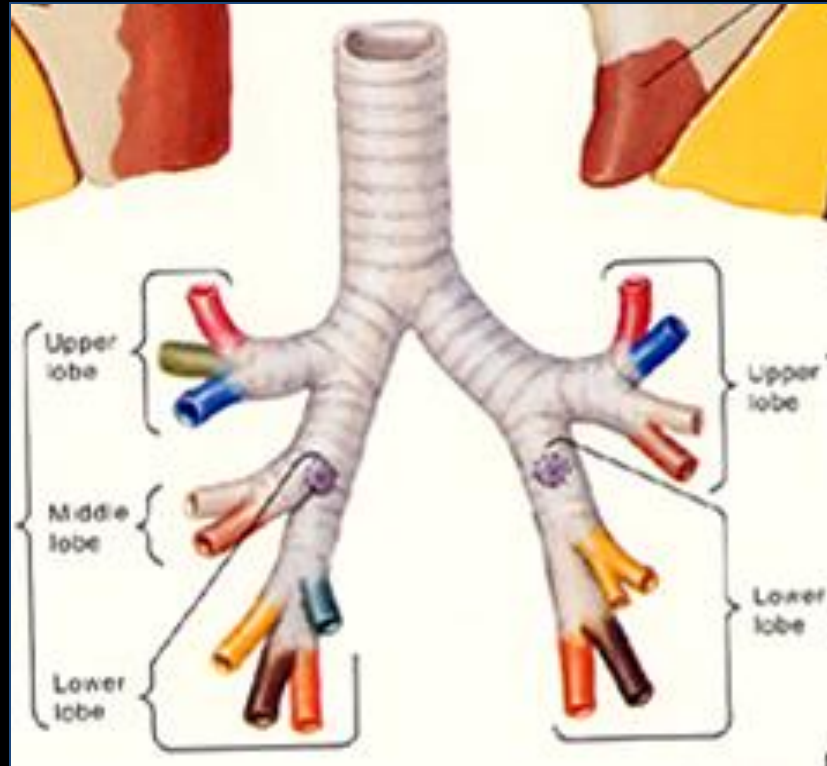
B6 segmentaire supérieure





B6 supérieur
 B7-8 antéro médial
 B9 latéral
 B10 postéro basal

SEGMENTATION PULMONAIRE



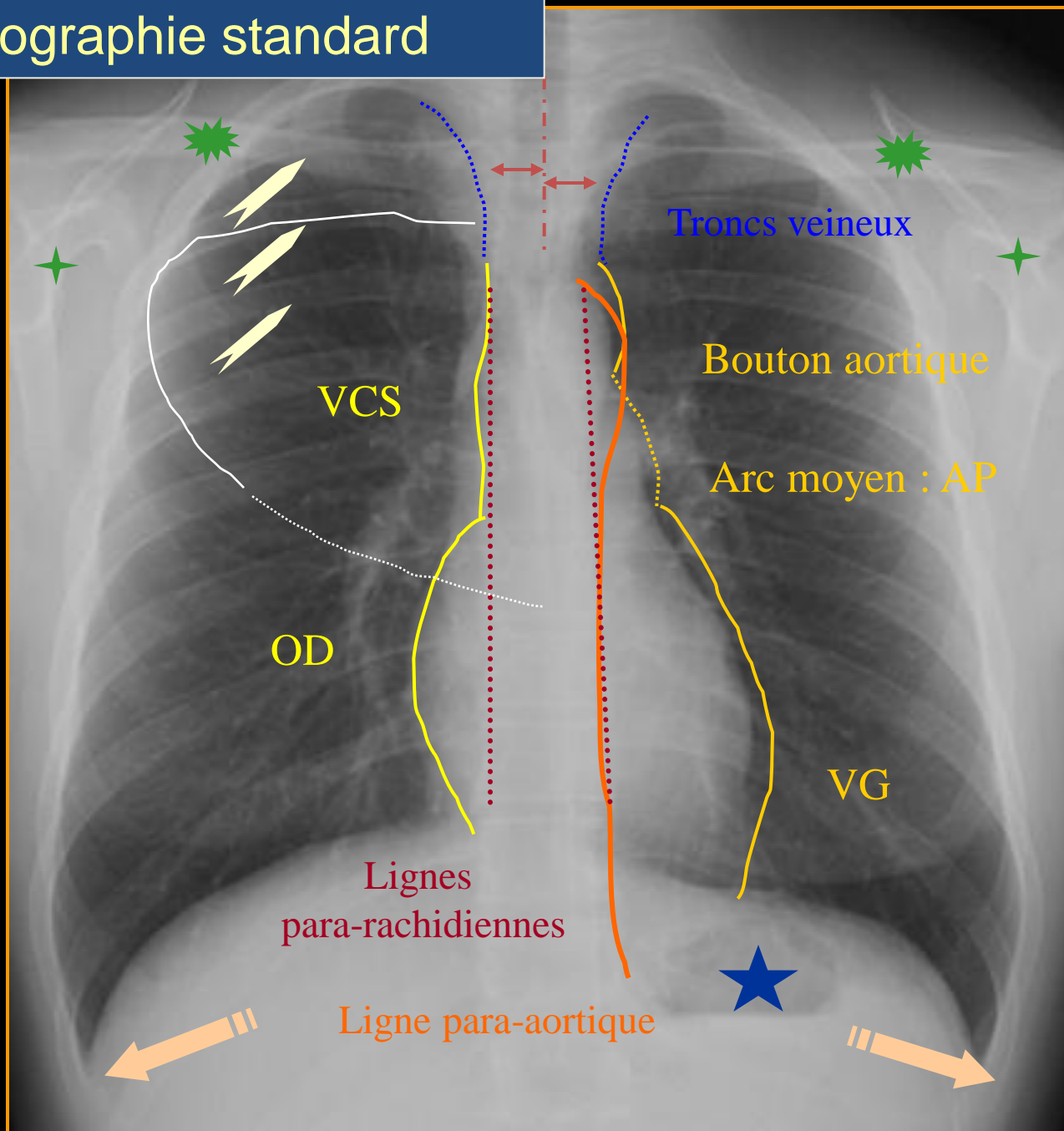


2/ RADIOANATOMIE DU MEDIASTIN

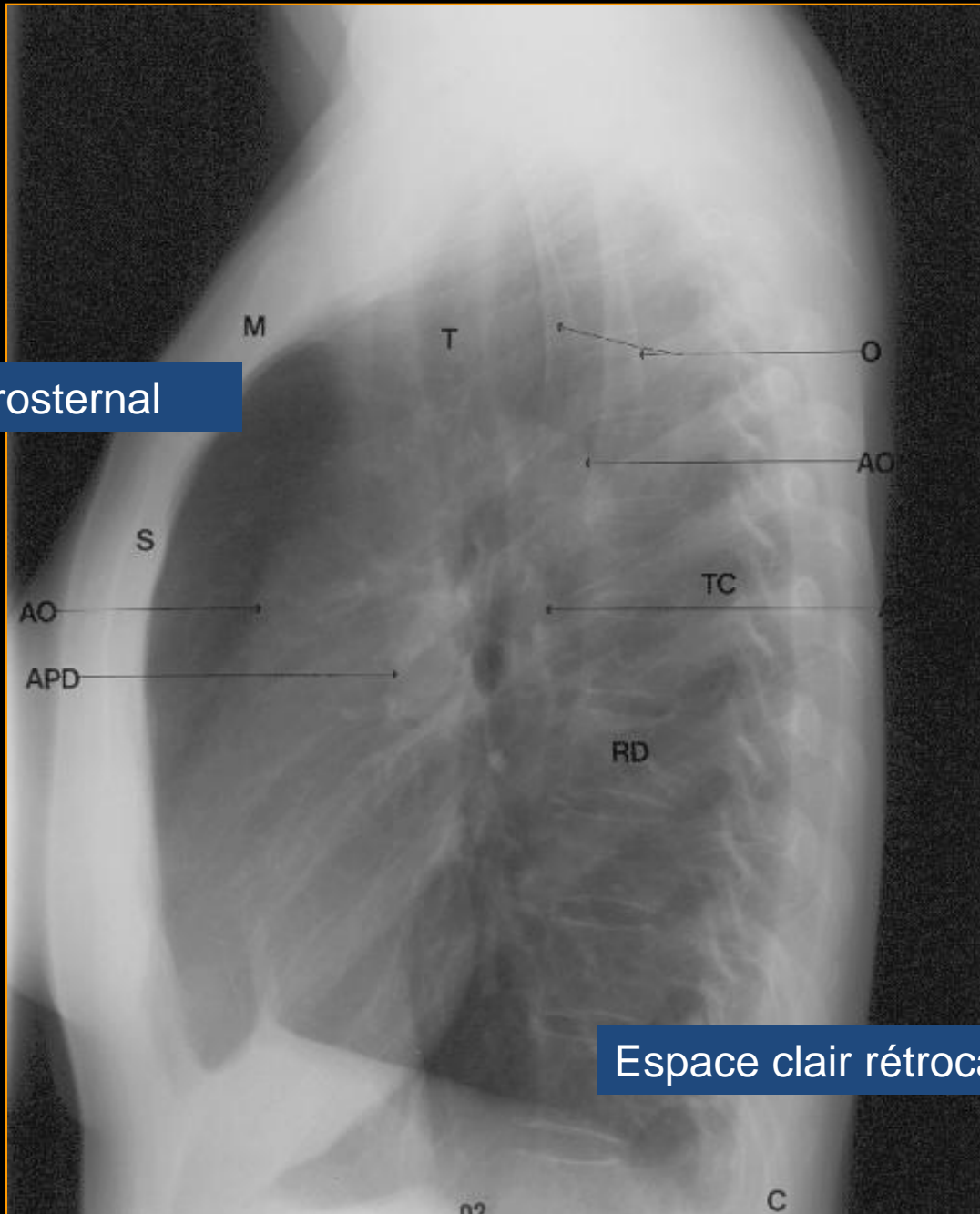
- **GENERALITES**
- OESOPHAGE
- CHAINES GANGLIONNAIRES

Radiographie standard

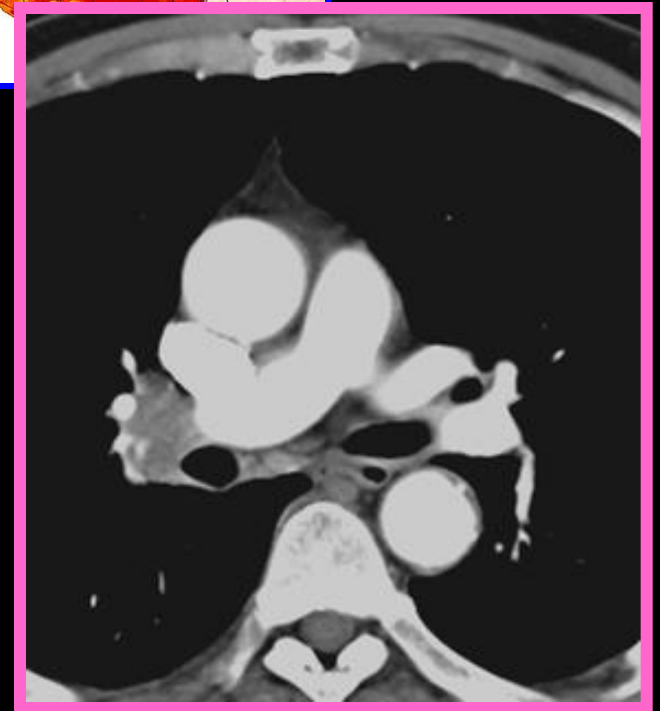
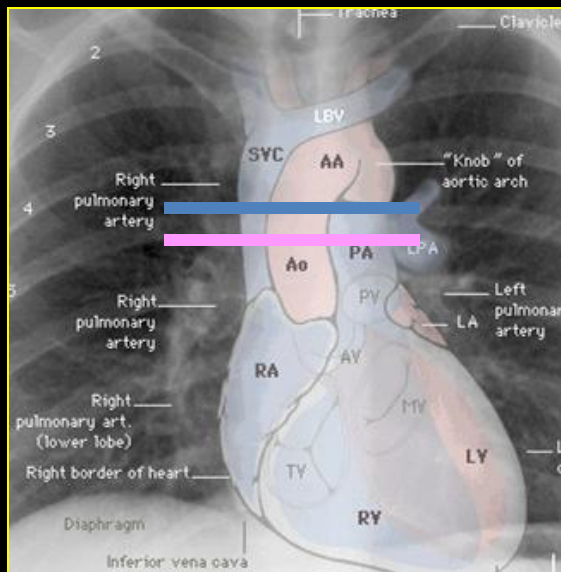
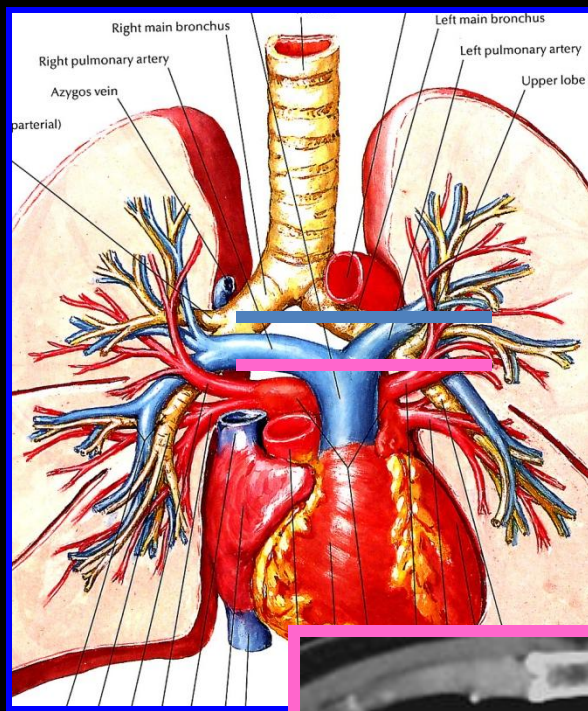
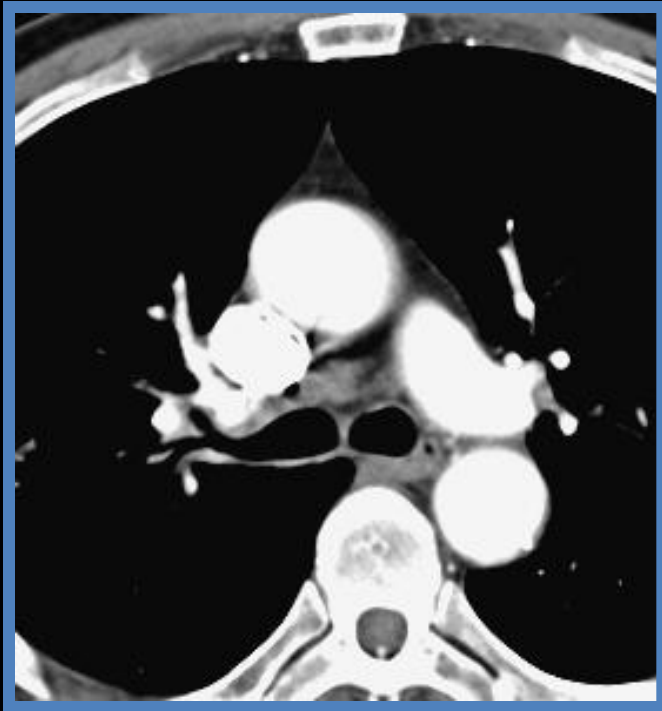
DE FACE

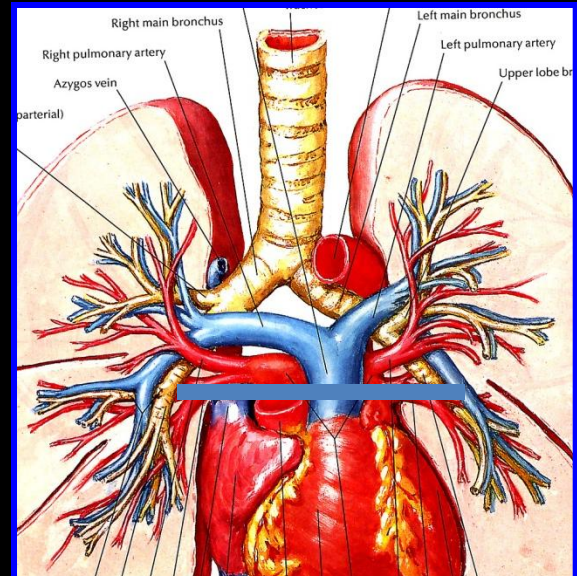
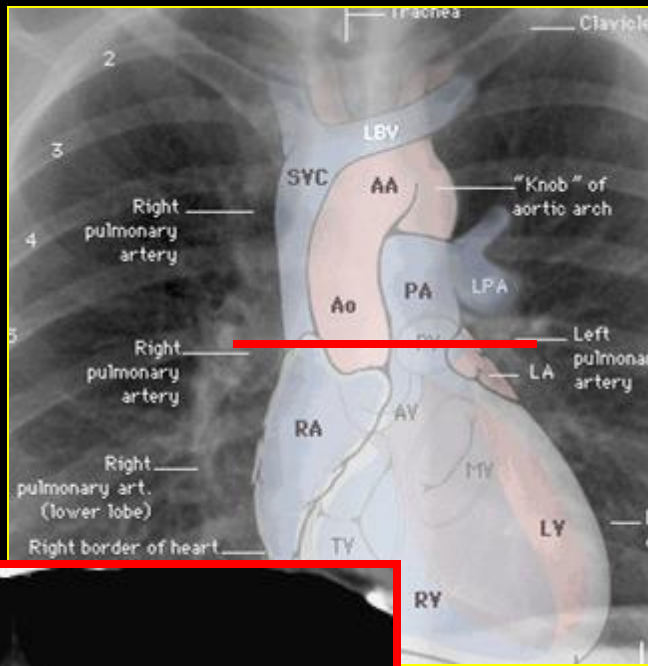


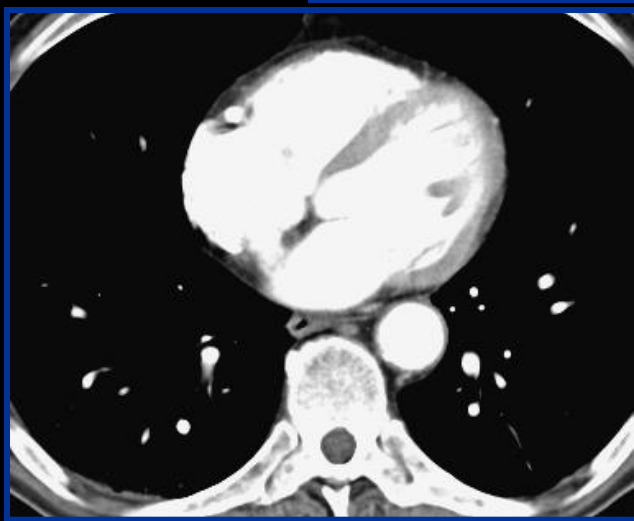
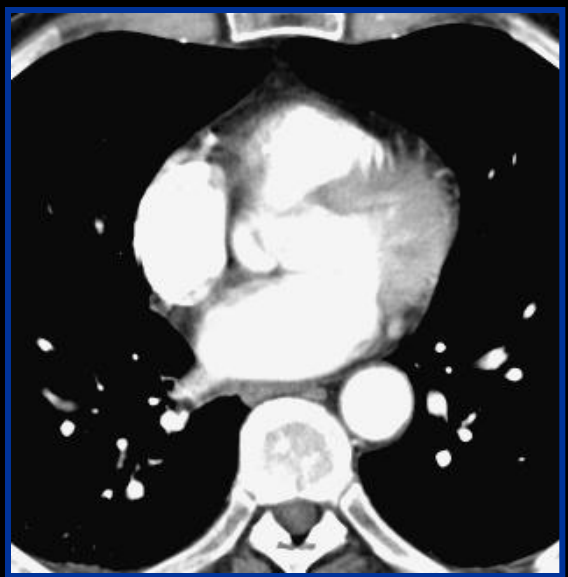
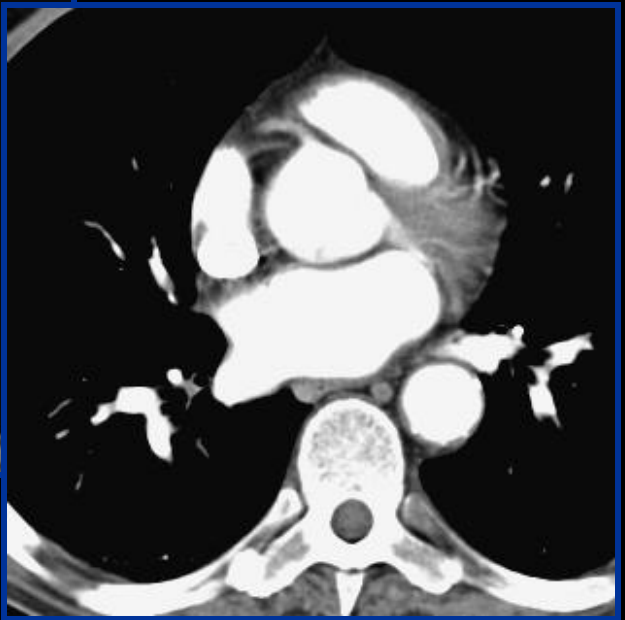
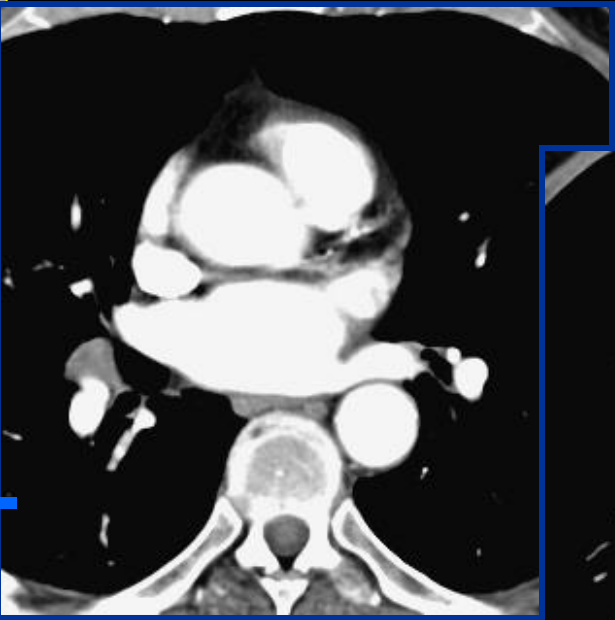
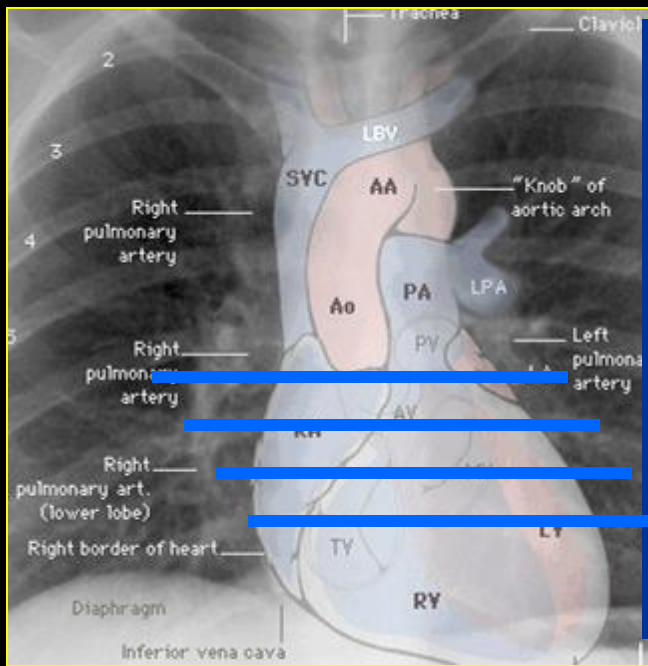
Espace clair rétrosternal

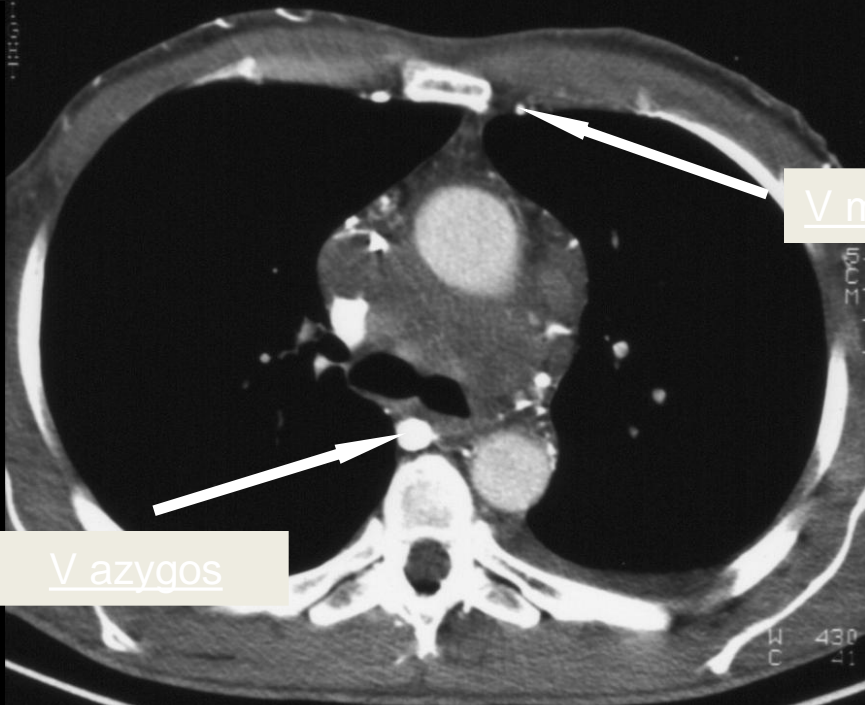
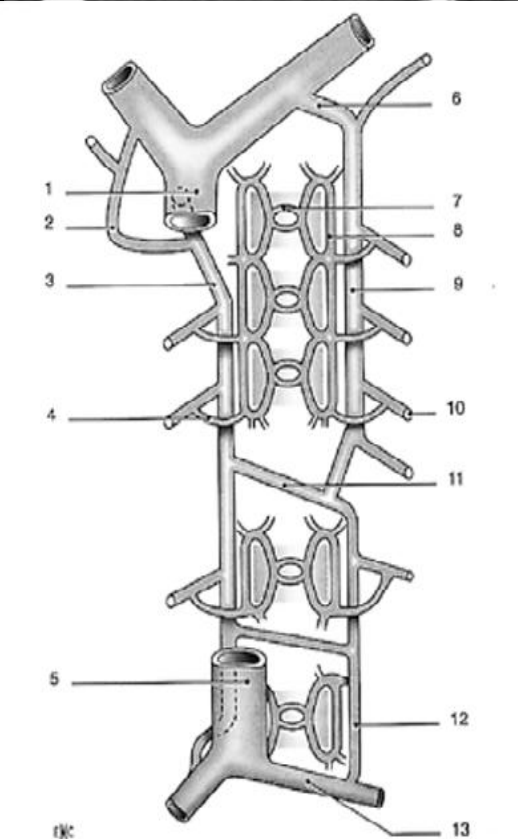
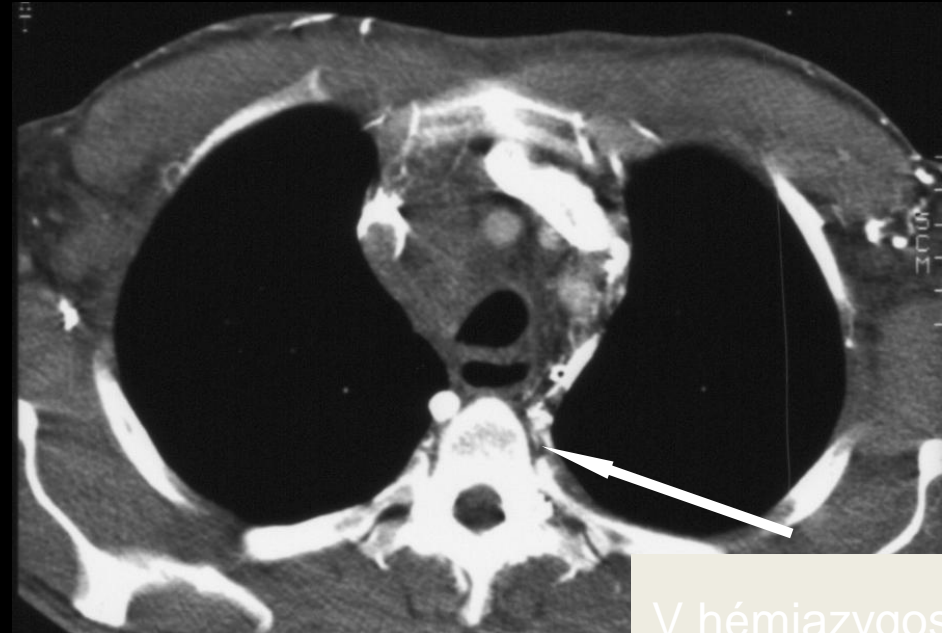
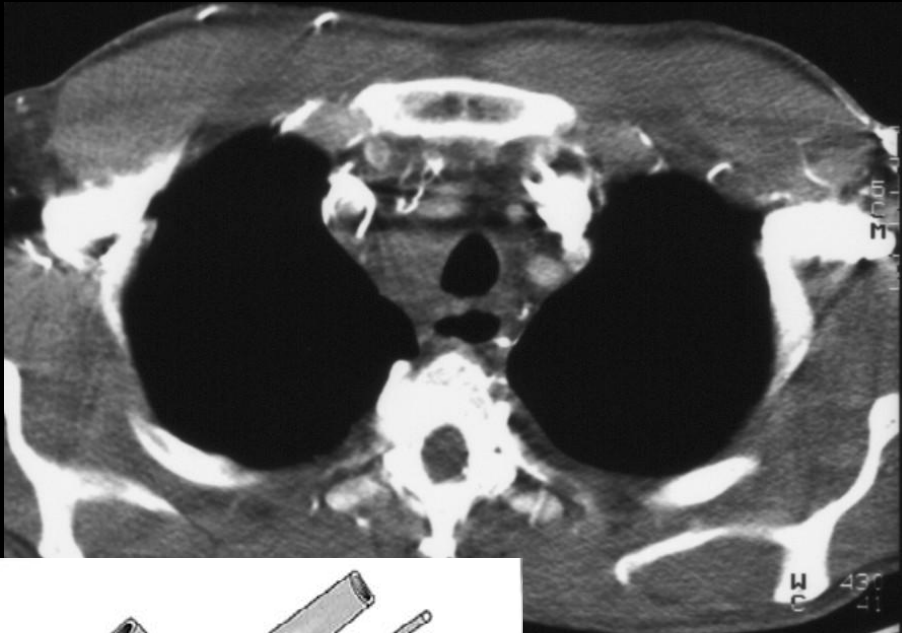


Espace clair rétrocardiaque











2/ RADIOANATOMIE DU MEDIASTIN

- GENERALITES
- **ŒSOPHAGE**
- CHAINES GANGLIONNAIRES

Définition

- Segment du tube digestif reliant l'hypopharynx à l'estomac
- Tube musculaire de 25 cm de longueur (de C6 à D11)
- 3 régions anatomiques : cervicale, thoracique et abdominale
- Passe en arrière de la trachée, traverse le médiastin postérieur dans toute sa hauteur, se déplace progressivement vers la gauche.
- Traverse le diaphragme à hauteur de T10 par le hiatus oesophagien ou il présente un rétrécissement

Anatomie

Œsophage **cervical** : de C6 à T1, 16 à 21 cm des AD

Œsophage **thoracique** : T1 à T10, 21 à 37 cm des AD

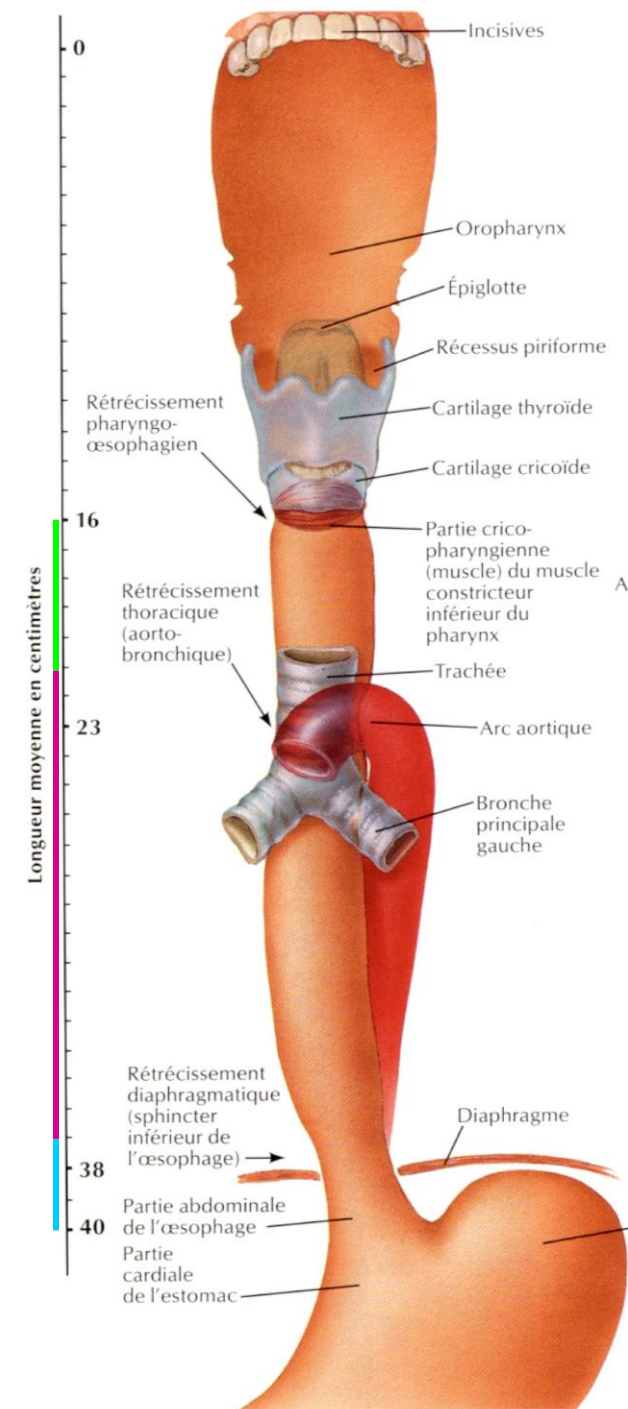
Œsophage **abdominal** : T10-11, 37 à 40 cm des AD

Œsophage intra-thoracique :

Tiers supérieur : de l'orifice supérieur du thorax à la bifurcation trachéale, à 24 cm approximativement des incisives supérieures

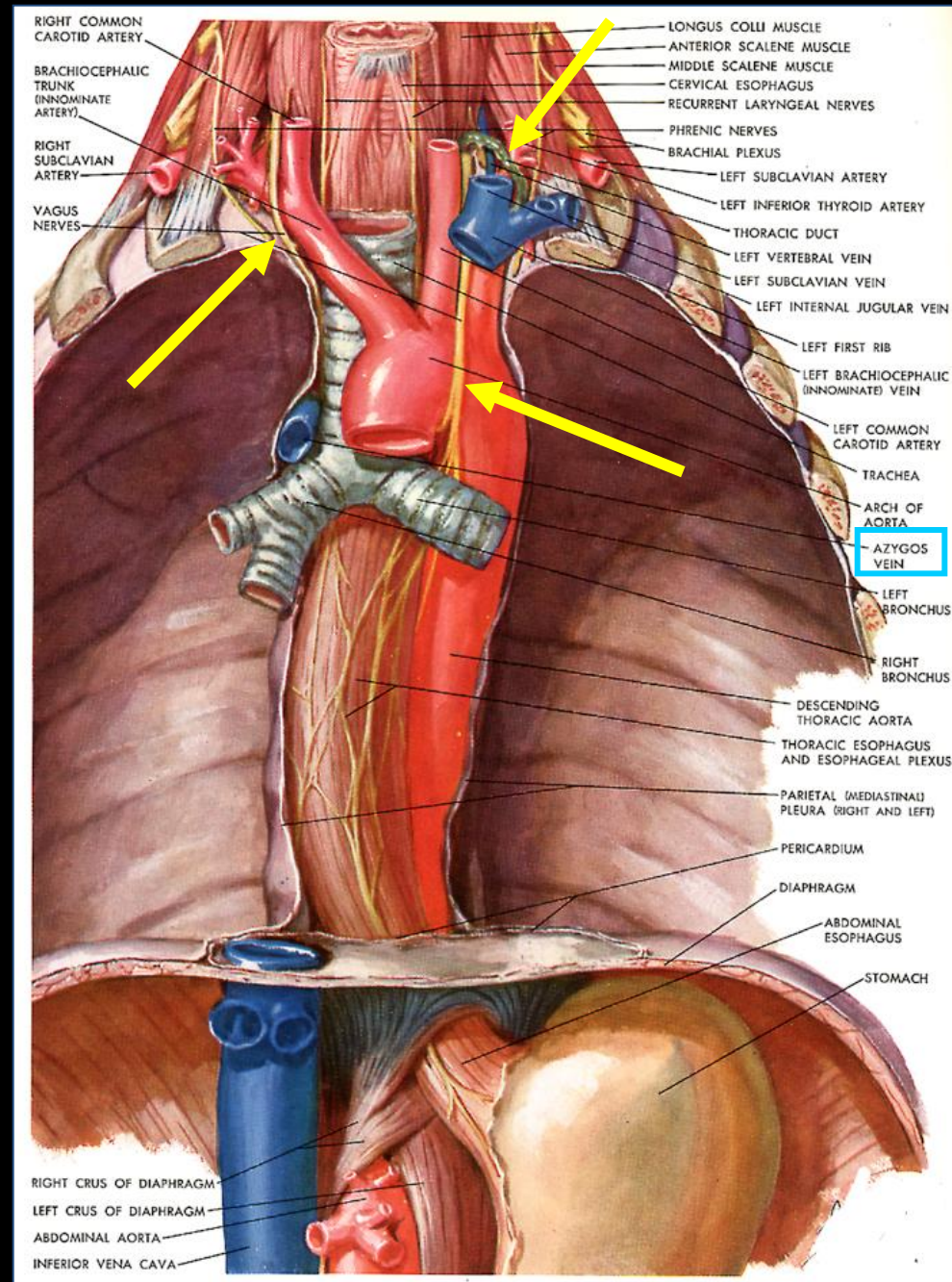
Tiers moyen : débutant à la hauteur de la bifurcation trachéale, de 24 à 32 cm approximativement des incisives supérieures

Tiers inférieur : (incluant l'oesophage abdominal), de 32 à 40 cm approximativement des incisives supérieures.



Rapports

- **Trachée** : axe du médiastin postérieur, bifurque en T5, l'oesophage y adhère par les muscles de Luschka
- **Conduit thoracique** : monte en arrière plaqué contre l'aorte, en rapport avec l'oesophage sur une partie de son trajet.
- **Nerfs vagues** :
droit : passe en arrière de l'oesophage
gauche : en avant de l'oesophage
- **Chaîne orthosympathique latéro-vertébrale** et ses ganglions
- **Azygos, hémiazygos, hémiazygos accessoire**



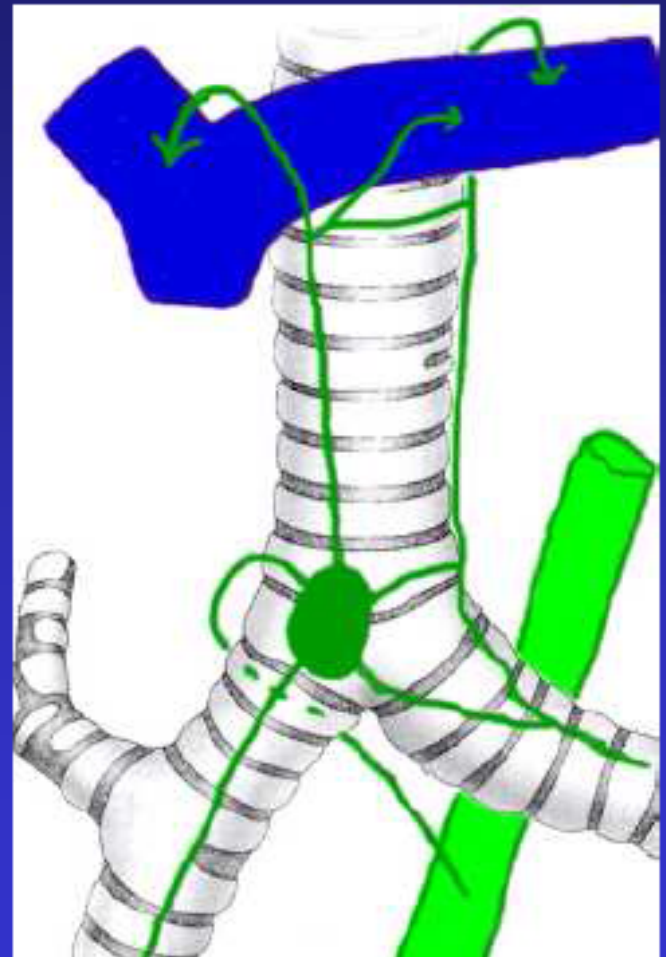


2/ RADIOANATOMIE DU MEDIASTIN

- GENERALITES
- OESOPHAGE
- CHAINES GANGLIONNAIRES

En résumé: chaque chaîne ganglionnaire :

- peut se limiter à de simples vaisseaux lymphatiques
- rejoint obligatoirement la circulation sanguine soit par voie veineuse, soit par l'intermédiaire du « canal thoracique »
- est anastomosée avec les chaînes voisines du médiastin.



Les loges ganglionnaires du médiastin

RUSCH 2009

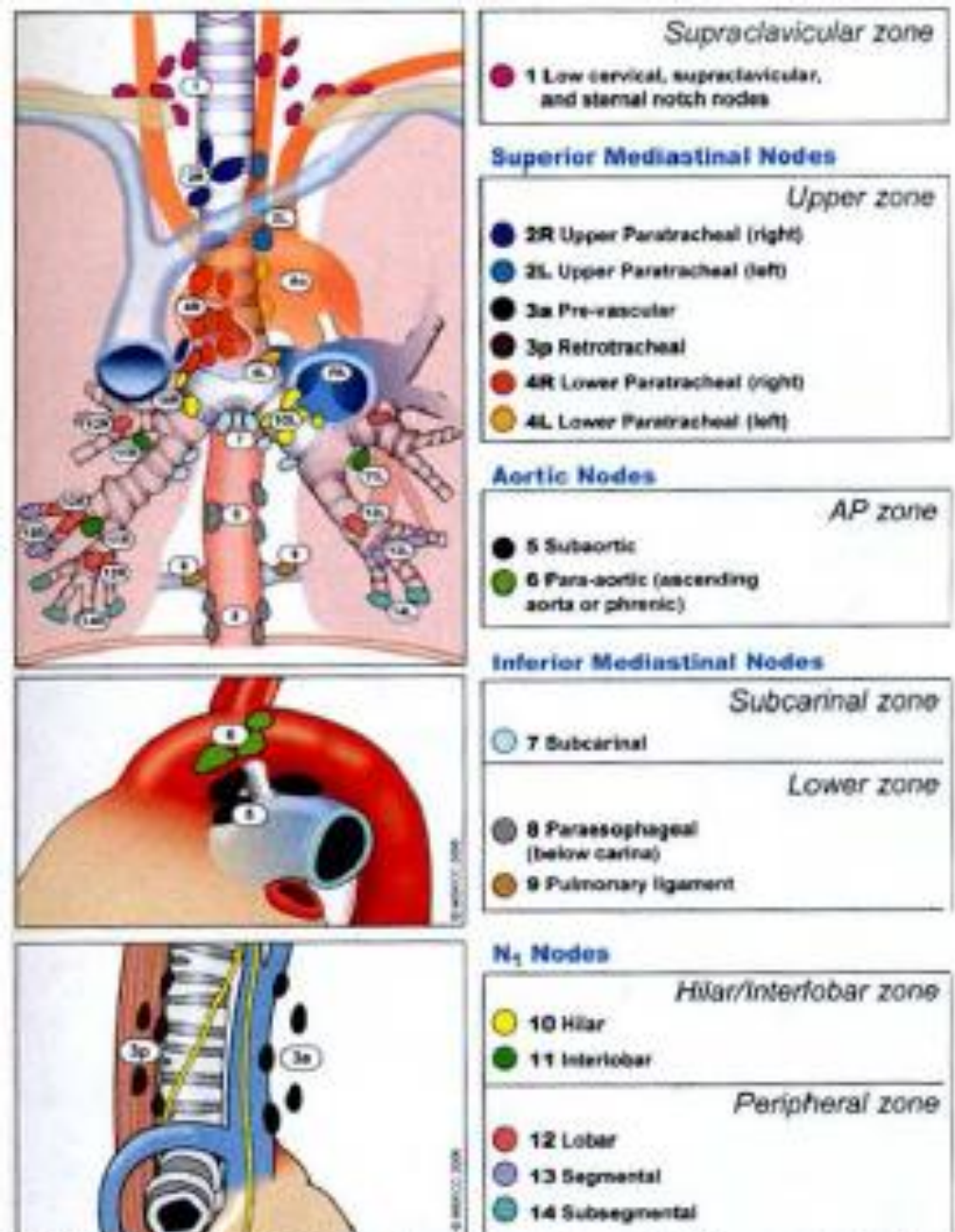
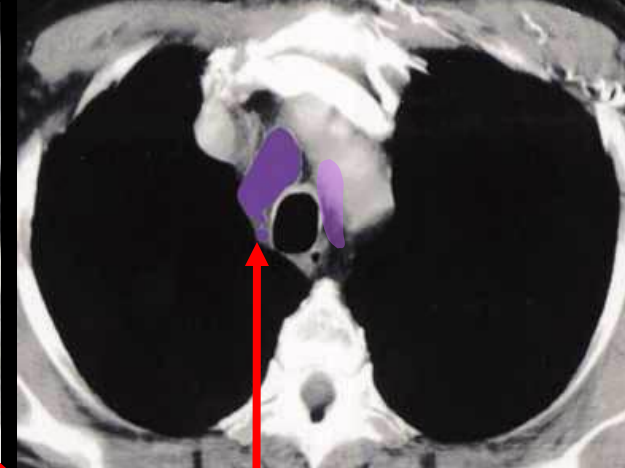
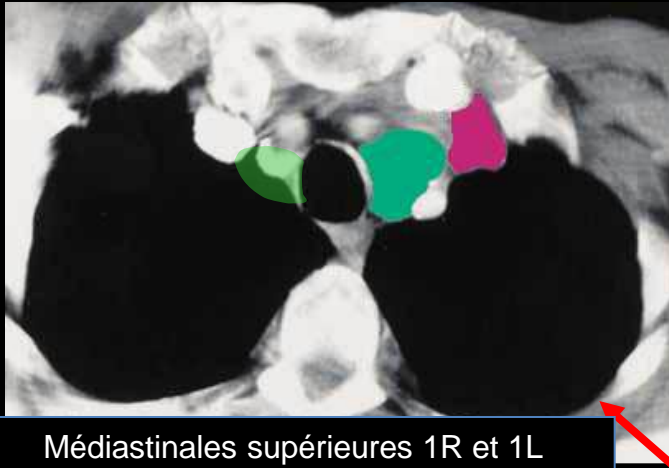
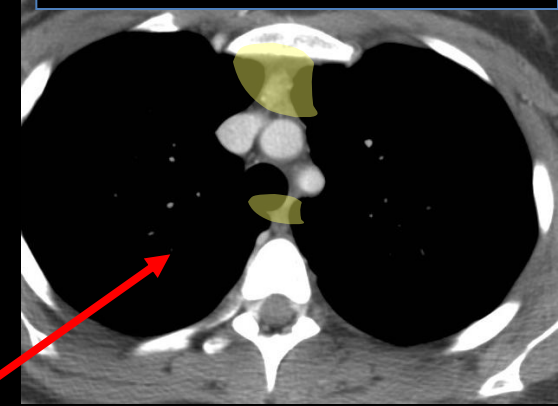


FIGURE 25.3. The IASLC lymph node map shown with the proposed amalgamation of lymph node levels into zones. (© Memorial Sloan-Kettering Cancer Center, 2009.)

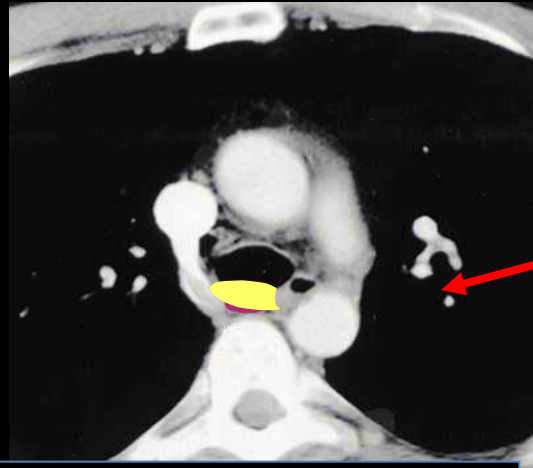
Paratrachéales supérieures 2R et 2L



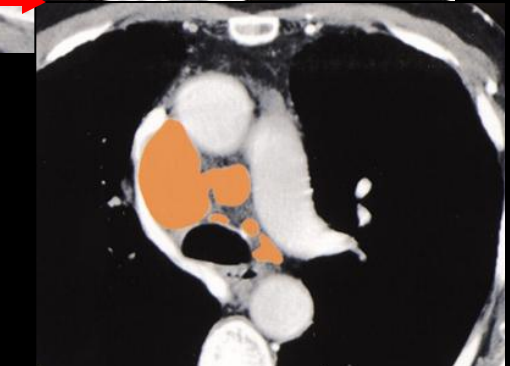
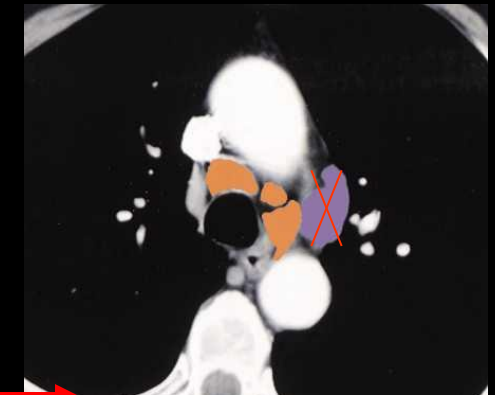
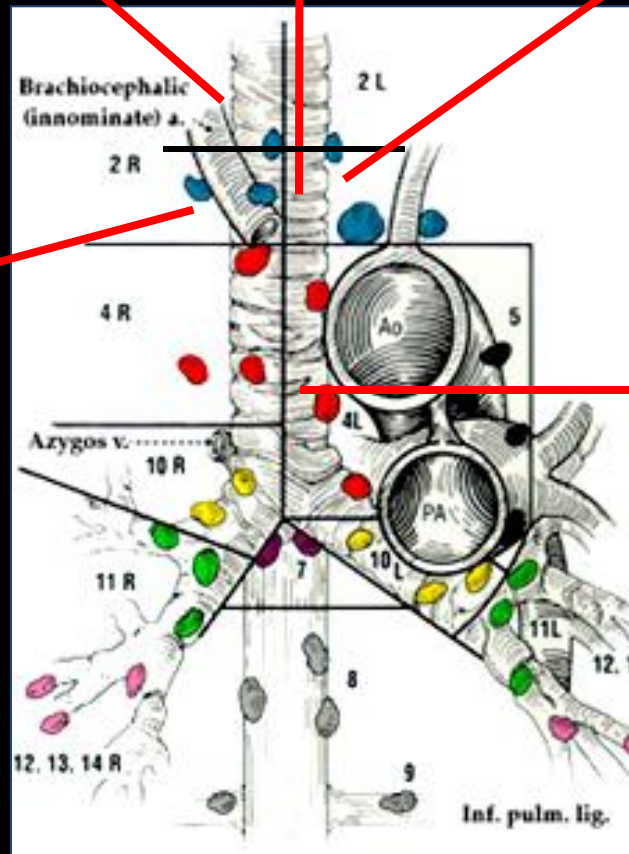
Prévasculaire 3A
rétrotrachéale 3R



Médiastinales supérieures 1R et 1L



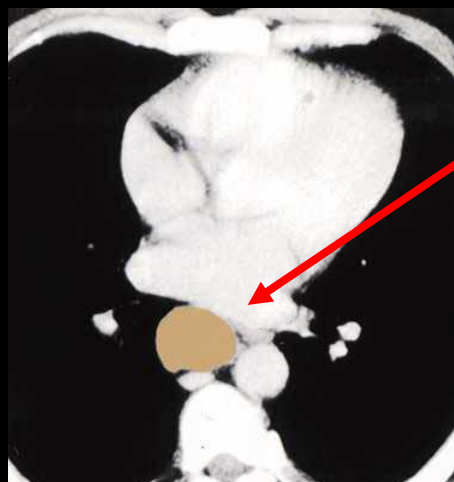
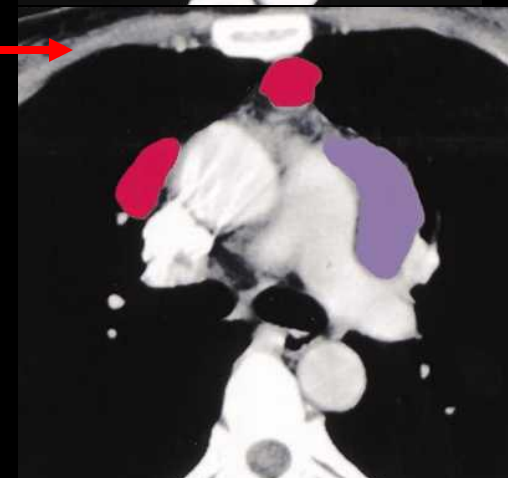
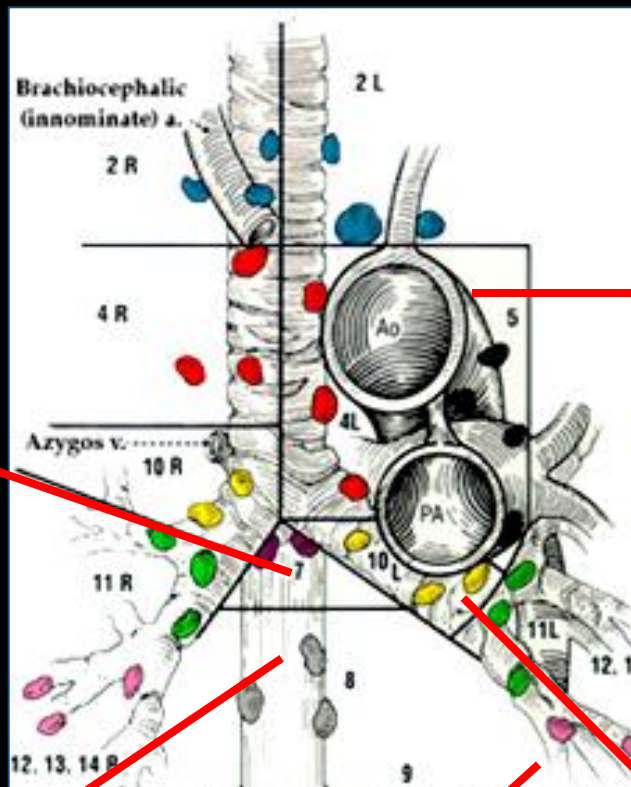
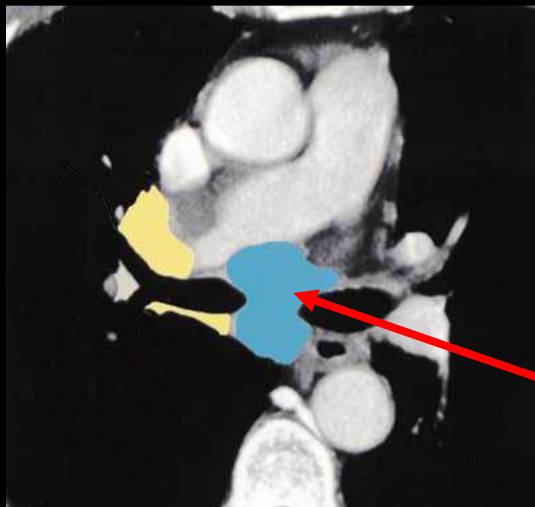
rétrotrachéale 3R



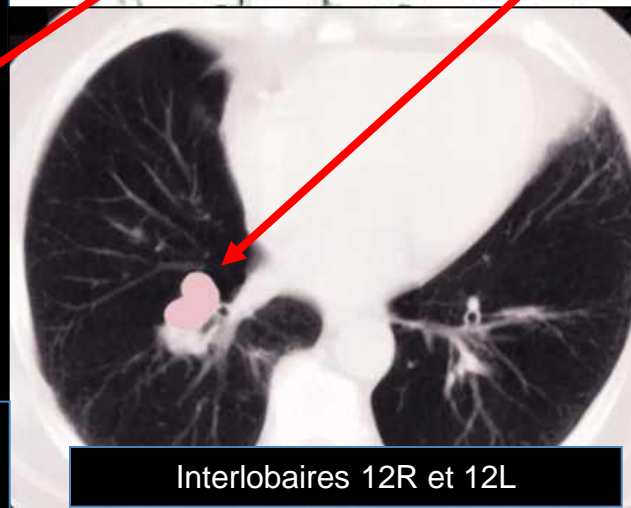
Paratrachéales inférieures droite
et gauche 4R et 4 L

Fenêtre aorto pulmonaire 5

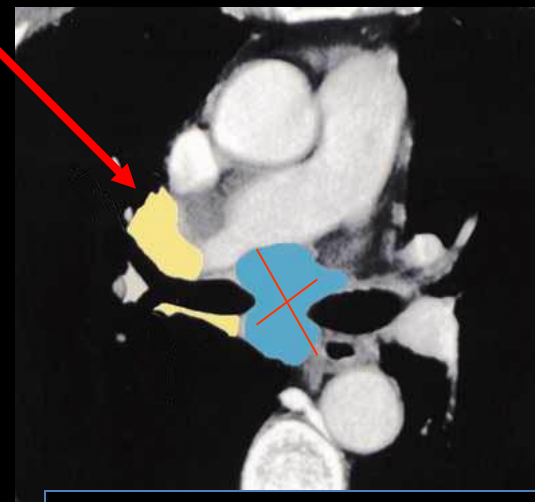
Sous carinaires 7



Para oesophagienne 8
Œsophage sous carinaire



Interlobaires 12R et 12L









Hilaires 10R et 10L

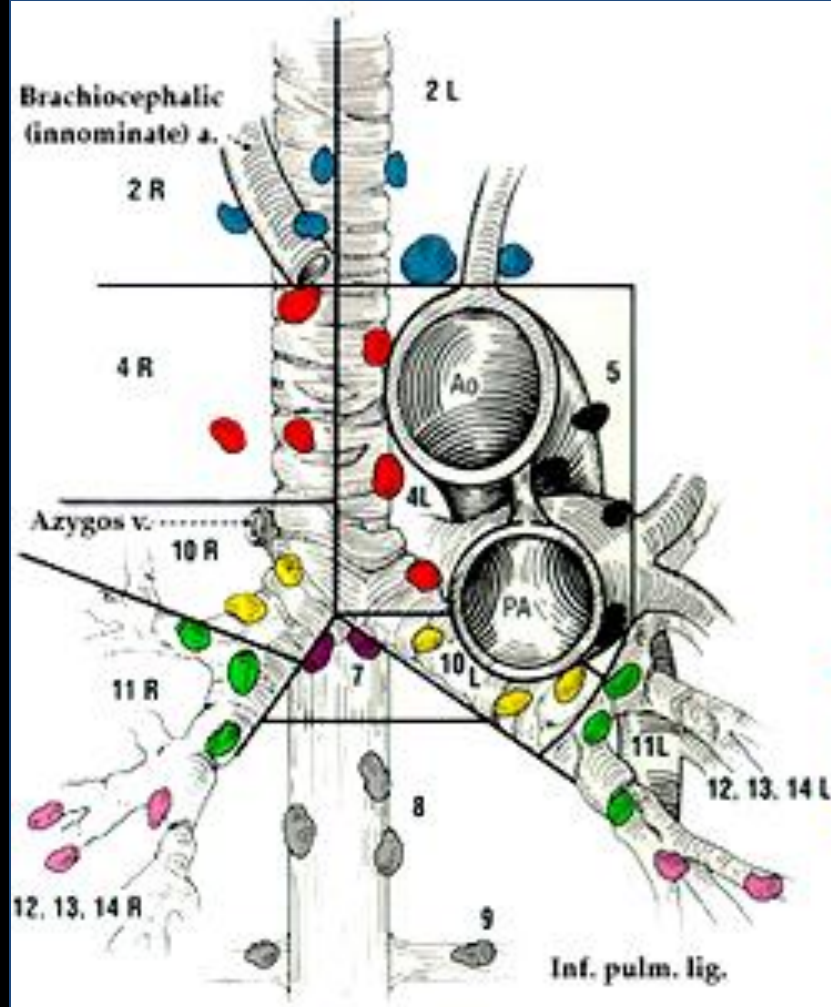
Regional Nodal Stations For Lung Cancer Staging

N₁ NODES

SUPERIOR MEDIASTINAL NODES

LOCATION

- | | | |
|---|---|--|
|  | 2R Right upper paratracheal nodes | Between intersection of caudal margin of innominate a. with trachea and the apex of the lung (supra-innominate nodes). |
|  | 2L Upper left paratracheal nodes | Between top of aortic arch and apex of the lung (supra-aortic nodes). |
|  | 4R Right lower paratracheal nodes | Between intersection of caudal margin of innominate a. with trachea and cephalic border of azygos v. |
|  | 4L Left lower paratracheal nodes | Between top of aortic arch and carina (medial to ligamentum arteriosum) |
|  | 10R Right tracheo-bronchial angle nodes | From cephalic border of azygos v. to origin of RUL bronchus. |
|  | 10L Left tracheo-bronchial angle nodes | Between carina and LUL (medial to ligamentum arteriosum). |



Merci de votre attention